

Upright Service Manual

**ProGen Models
1073300 & 1073290**

 **ProTeam**[®]
Cleaning for Health[®] Since 1987

Table of Contents

ATTENTION

Before servicing any part or proceeding with any repair procedure on any ProTeam vacuum, ALWAYS disconnect the vacuum from power source.

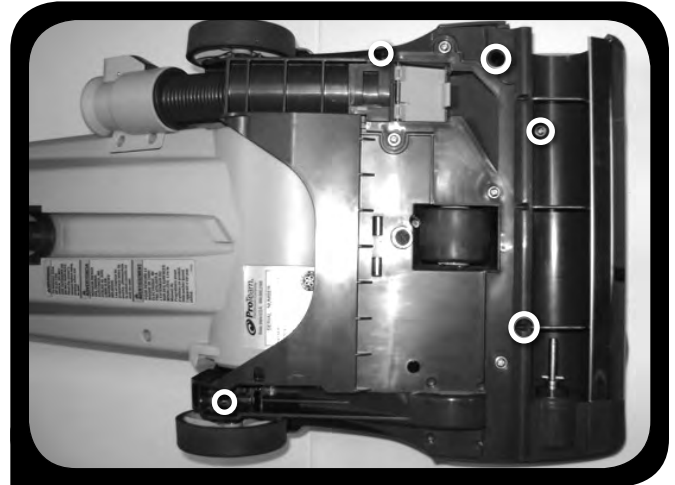
Base Cover.....	1
Clutch, LED Front Light, Belts, and Control Boards.....	2-3
Filter Bag Housing	4
Foot Pedal	5
Motor.....	5-7
Power Head Hose	8
Front Wheel.....	8
Rear Wheel	9

View Upright Vacuum
Wiring Schematic
at www.pro-team.com

Base Cover



1. Remove brush



2. Remove five (5) (M4 x 16mm length) screws



3. Remove cover - Lift up on one side

To Reassemble. Repeat steps in reverse.

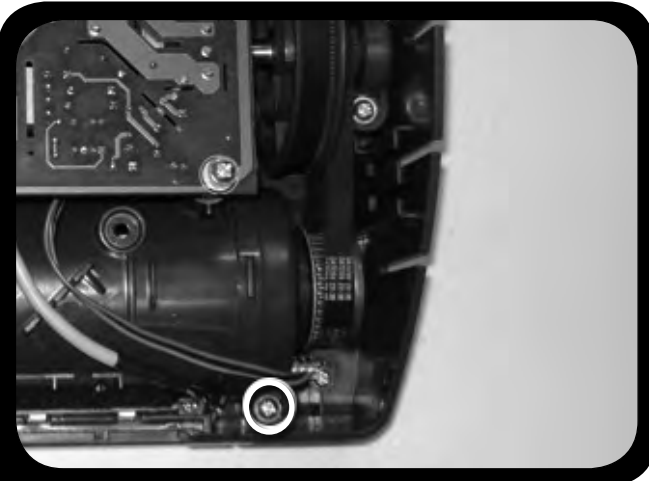
Clutch, LED Front Light, Belts, and Control Boards



1. Remove rubber bumper - Pull straight up



2. Remove lens - Lift up on corner



3. Remove RPM sensor - Remove screw (M4 x 16mm length)



4. Lift straight up on sensor control board, do not lift by wires

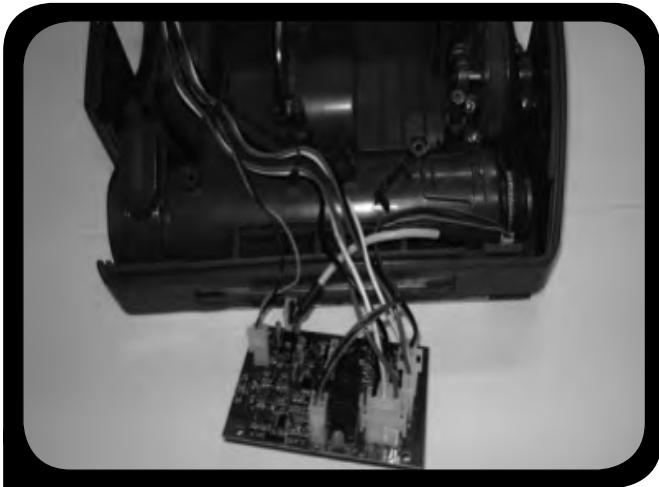


5. Remove LED light - Lift straight up on sensor control board, do not lift by wires

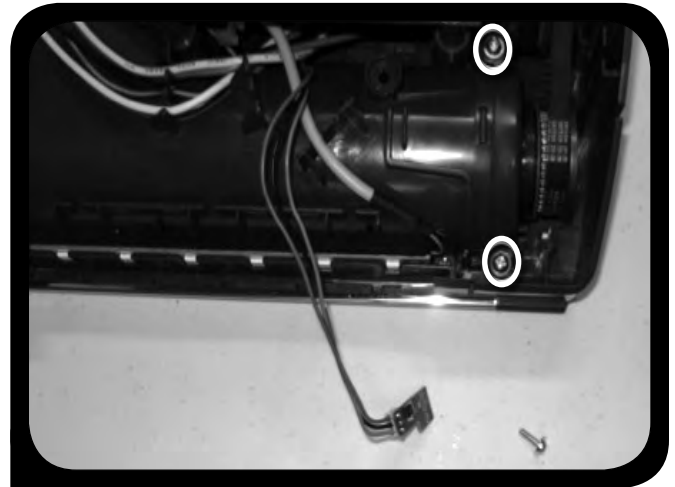


6. Remove printed circuit board - Remove two (2) screws (M4 x 16mm length)

Clutch, LED Front Light, Belts, and Control Boards



7. Lift up on control board



8. Remove clutch assembly - Remove two (2) (M3 x 12mm length) screws



9. Remove clutch assembly - Slide belt off pulley



10. Remove clutch assembly

To Reassemble. Repeat steps in reverse.

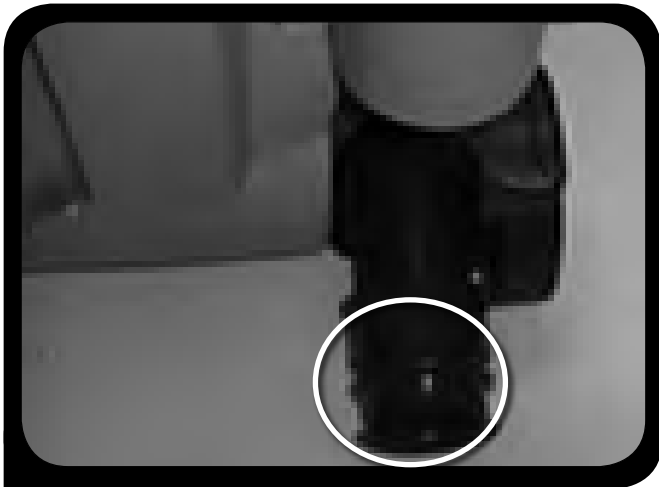
Filter Bag Housing



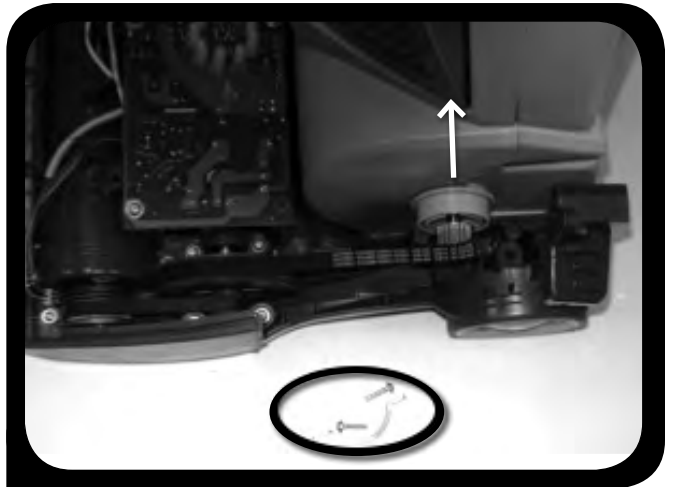
1. Remove filter bag housing - Tilt filter bag housing back



2. Remove two (2) (M4 x 16 mm length) screws and bracket on each side



3. Remove power head hose from bag housing



4. Lift up on bag housing and slide belt off motor pulley

To Reassemble. Repeat steps in reverse.

Foot Pedal



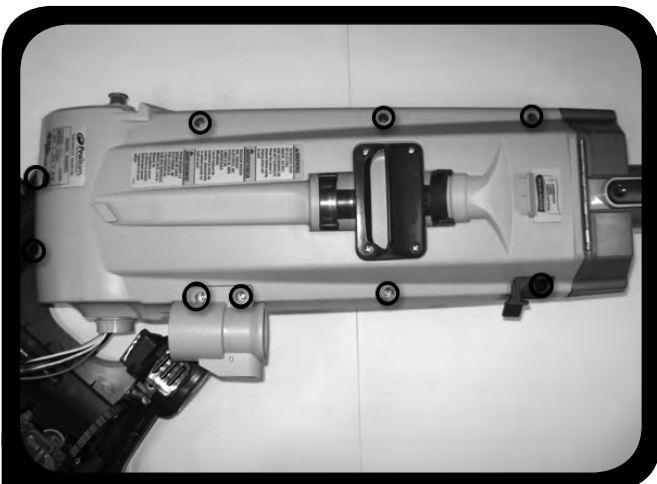
1. Remove foot pedal



2. Tilt/rotate pedal forward (wear gloves to prevent cuts from possible sharp edges in this assembly) - Lift up on foot pedal

To Reassemble. Repeat steps in reverse.

Motor



1. Remove rear bag housing cover - Remove nine (9) (M4 x 20mm length) screws

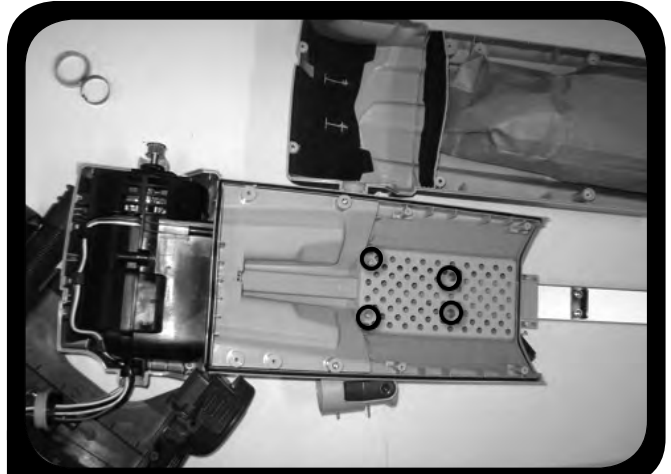


2. Remove plastic sleeve bearing each side - pull straight off

Motor



3. Remove steel sleeve bearing on each side - Pull straight off



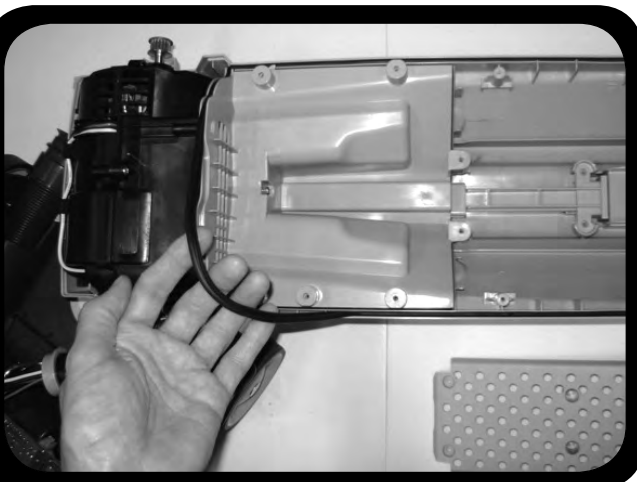
4. Remove filter plate - Remove four (4) screws (M4 x 20mm length)



5. Remove filter door on each side



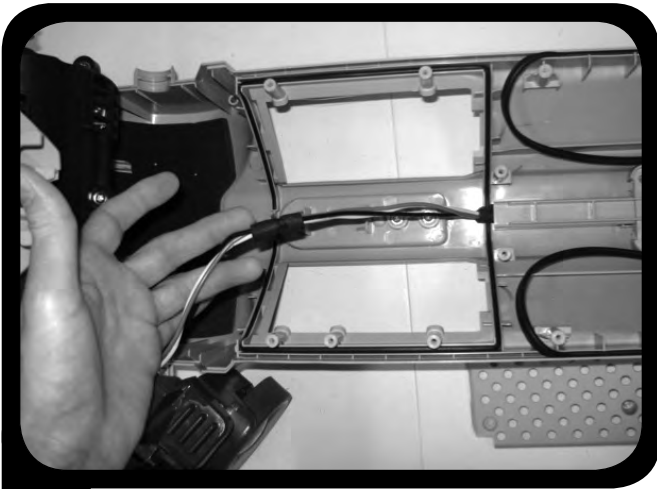
6. Remove air separator and motor - Remove two (2) (M4 x 20mm length) screws



7. Remove gasket



8. Lift motor assembly upward



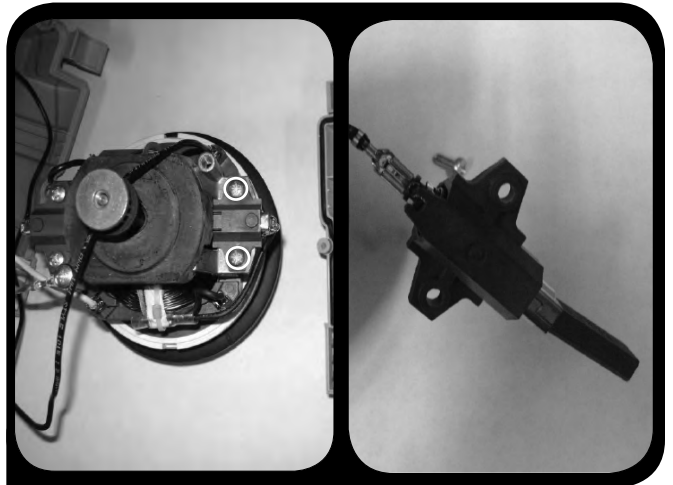
9. Lift wiring harness upward



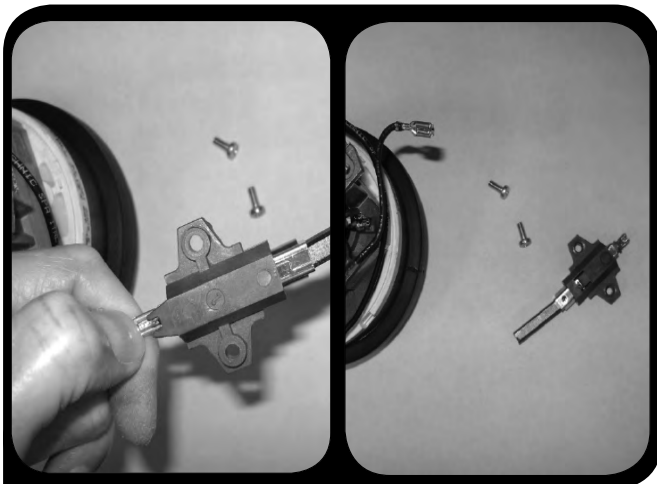
10. Remove air separator - Remove two (2) (M4 x 20mm length) screws



11. Remove upper motor housing - Remove six (6) (M4 x 16mm length) screws



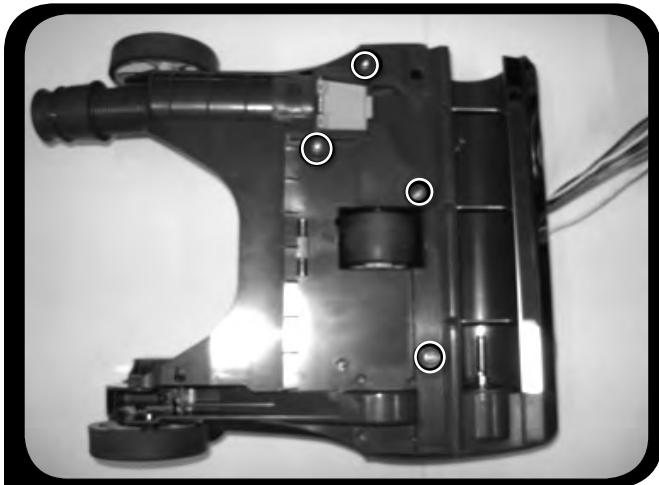
12. Remove motor brush assembly - Remove two (2) (M4 x 16mm length) screws



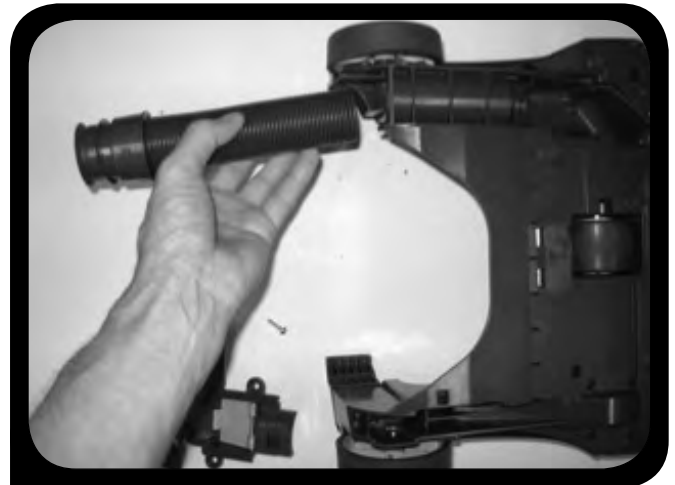
13. Pinch tab end and pull to release

To Reassemble. Repeat steps in reverse.

Power Head Hose



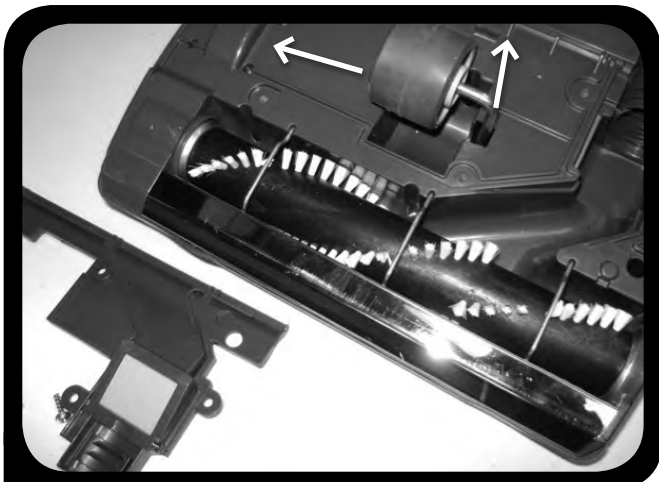
1. Remove power head hose - Remove four (4) (M4 x 16 mm length) screws



2. Remove hose by twisting/unthreading

To Reassemble. Repeat steps in reverse.

Front Wheel



1. Remove center wheel - Pull wheel upwards - Slide wheel off shaft

To Reassemble. Repeat steps in reverse.

Rear Wheel



1. Remove rear wheel (push) e-clip off shaft

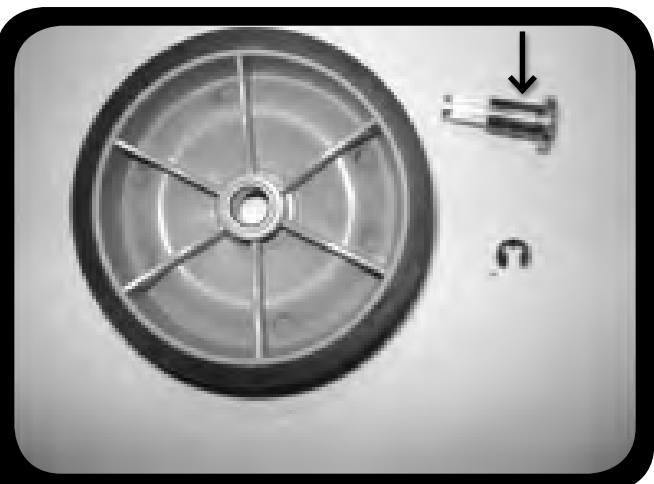


2. Pry axle from base

or



Tap axle out with a hammer



3. Note: Shaft knurl is a light press fit into the base.

To Reassemble. Repeat steps in reverse.



P.O. Box 7385, Boise, Idaho 83707 • 866.888.2168
www.pro-team.com