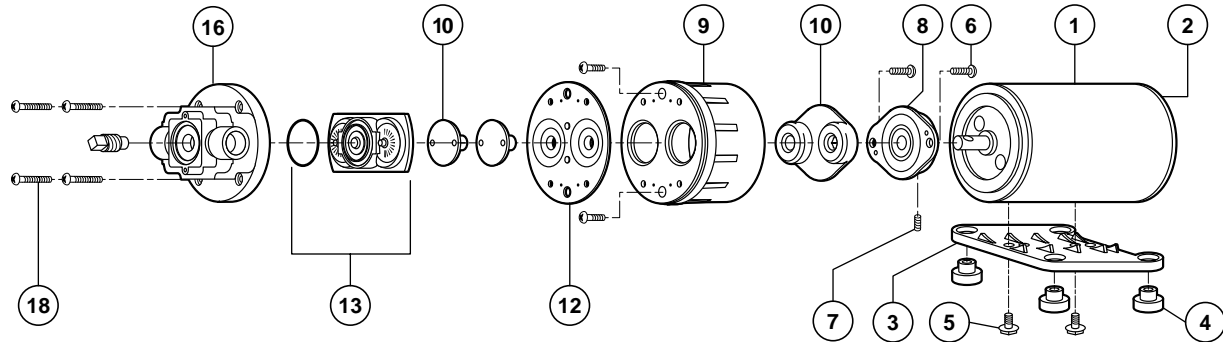


# 2100 SERIES DEMAND PUMP



| KEY | PART NO.  | DESCRIPTION                                | QTY.     |
|-----|-----------|--|----------|
| 1   | 02029-000 | Motor 115 Volt AC TENV                     | 1        |
|     | 02039-001 | Motor 230 Volt AC TENV                     |          |
|     | 02009-004 | Motor 12 Volt DC TENV                      |          |
|     | 02019-001 | Motor 24 Volt DC TENV                      |          |
| 2   | 20115-111 | Brush Endbell/Rect. Assy. (AC) TENV        | 1        |
|     | 20115-219 | Brush Endbell/Rect. Assy. (AC) TEFC N/BRG. |          |
|     | 20115-116 | Brush Endbell Assy. (DC) TENV              |          |
|     | 20115-213 | Brush Endbell/Rect. Assy. (DC) TEFC N/BRG. |          |
|     | 20252-500 | Internal Rectifier w/Leads**               | 1        |
| 3   | 11028-101 | Motor Base Plate Assy. (Plastic)           | 1        |
| 4   | 20132-000 | Grommets                                   | Set of 4 |
| 5   | 20131-002 | Baseplate Screws                           | Set of 2 |

## CAM BEARING / DIAPHRAGM KIT

|       |           |                           |   |
|-------|-----------|---------------------------|---|
|       | 21004-100 | #0 Cam, VITON ® Diaphragm | 1 |
|       | 21004-200 | #0 Cam, BUNA Diaphragm    | 1 |
|       | 21004-400 | #0 Cam, SANTO Diaphragm   | 1 |
|       | 21004-101 | #1 Cam, VITON ® Diaphragm | 1 |
| Kit   | 21004-201 | #1 Cam, BUNA Diaphragm    | 1 |
| Incl. | 21004-401 | #1 Cam, SANTO Diaphragm   | 1 |
| 6     | 21004-102 | #2 Cam, VITON ® Diaphragm | 1 |
| 7     | 21004-202 | #2 Cam, BUNA Diaphragm    | 1 |
| 8     | 21004-402 | #2 Cam, SANTO Diaphragm   | 1 |
| 10    | 21004-104 | #4 Cam, VITON ® Diaphragm | 1 |
| 12    | 21004-204 | #4 Cam, BUNA Diaphragm    | 1 |
|       | 21004-404 | #4 Cam, SANTO Diaphragm   | 1 |
|       | 21004-105 | #5 Cam, VITON ® Diaphragm | 1 |
|       | 21004-205 | #5 Cam, BUNA Diaphragm    | 1 |
|       | 21004-405 | #5 Cam, SANTO Diaphragm   | 1 |

| KEY  | PART NO.  | DESCRIPTION  | QTY.     |
|------|-----------|--|----------|
| 9    | 20428-100 | Bearing Cover Poly Pro   | 1        |
| *13  |           | Check Valve Assy. (Single Bypass)  | 1        |
|      | 20028-002 | SANTOPRENE   |          |
|      | 20028-012 | BUNA N/FAB   |          |
|      | 20028-045 | VITON ®  |          |
|      |           | Check Valve Assy (Double Bypass)   |          |
|      | 20028-003 | SANTOPRENE   |          |
|      | 20028-022 | BUNA N/FAB   |          |
|      | 20028-078 | VITON ®  |          |
|      |           | Check Valve Assy (Single Bypass Vented)  |          |
|      | 20028-048 | SANTOPRENE   |          |
|      | 20028-079 | VITON ®  |          |
|      | 20028-028 | BUNA N/FAB   |          |
| *14  |           | Bypass Springs & Poppet Kit  |          |
| *15  | 20378-000 | For 30 PSI Bypass Nominal (Yellow)   | Set of 2 |
|      | 20378-001 | For 50 PSI Bypass Nominal (Blue)   | Set of 2 |
|      |           | Standard Bypass Springs shown above. For correct bypass spring part number for your model, request specific parts list, giving the complete pump model number. |          |
|      | 20500-507 | Pump Housing Poly Pro  | 1        |
| 16   | 21050**   | Pump Head Ass'y. Use Pump Dash Number for Pumphead Number  |          |
| 18   | 20131-001 | Pump Screws  | Set of 6 |
| 6-18 |           | Brush Kit  | Set of 2 |
|      | 20097-000 | For 115 & 230 Volt AC Motor  | Set of 2 |
|      | 20097-001 | For 12 & 24 Volt DC Motor  | Set of 2 |
|      | 20132-005 | Fan Shroud Kit   | 1        |

\* Parts included In Pump Service Kit \*\* Not shown in diagram