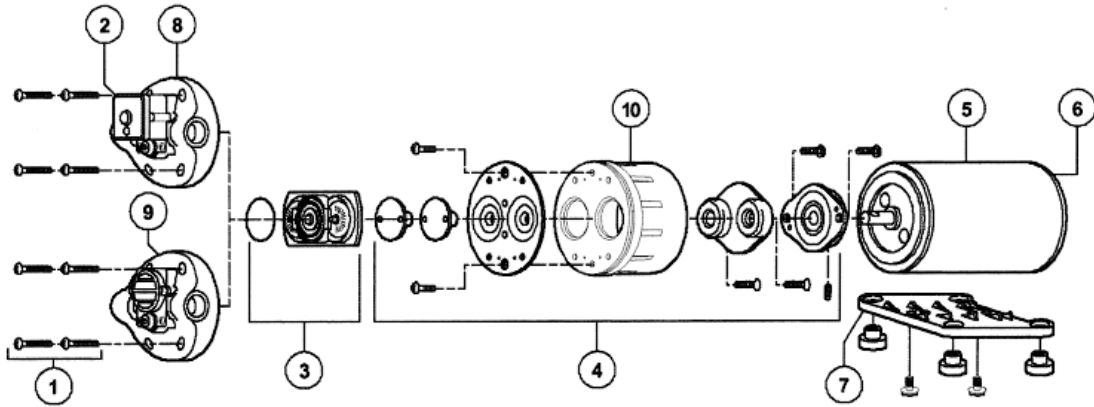


AP33

Flojet Pump D3131V5011



| KEY | DESCRIPTION | KEY | DESCRIPTION |
|-----|------------------------------------|-----|--------------------------------|
| 1 | Pump Screws | 6 | Motor Rear End Bell Assembly |
| 2 | Pressure Switch Assembly | 7 | Base Plate/Grommet Assembly |
| 3 | Check Valve Assembly (With O Ring) | 8 | Upper Housing (Switch By Pass) |
| 4 | Diaphragm/Cam Bearing Assembly | 9 | Upper Housing (By Pass Only) |
| 5 | Motor Assembly (Less Base Plate) | 10 | Bearing Cover |

Stocked Parts

- #2 – PF02090-100
- #3 – PF20914-022A
- #4 – PF21022-022A
- #8 – PFDH31V501

Other Parts

- #5 – 2009-114A
- #6 – 20115-116