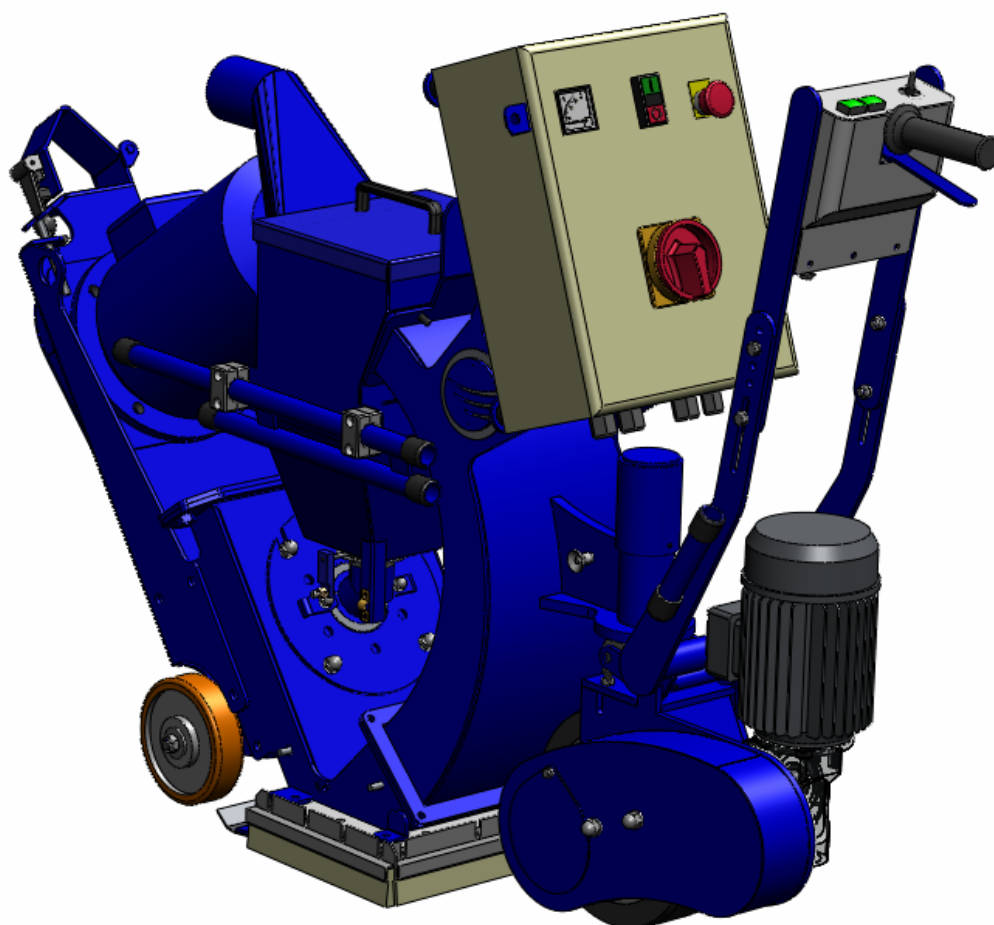




# **1-10DPS75**

*Version 1.0*



**EC DECLARATION OF CONFORMITY**

in accordance with Appendix II sub A of Directive 98/37/EC

**BLASTRAC B.V.**

Utrechthaven 12

NL - 3433 PN NIEUWEGEIN

Tel: 0031 (0)30 601 88 66

Fax: 0031 (0)30 601 83 33

Info@Blastrac.nl

The Netherlands

Declare under our sole responsibility that the machine as described below  
Conforms with the Health and Safety requirements of the European Directive  
of the machine Safety.

In case of changes to the machine without our written authorization this declaration loses its  
validity.

**Model:** **BLASTRAC 1-10DPS75/.....** **Serial number: .....**

1. satisfies the conditions set out in the Machine Directive (Directive 98/37/EC); Low voltage directive (73/23/CEE, as last amended; EMC directive 89/336/CEE, as last amended)
2. satisfies the following harmonized standards:  
NEN-EN 349, NEN-EN 418, NEN-EN 294 and NEN-EN 60204

Nieuwegein .....

  
Michel Kalisvaart

## **Index**

<b>EC Declaration of Conformity</b>	<b>02</b>
<b>1. Index</b>	<b>03</b>
<b>2. Machine description</b>	<b>04</b>
<b>3. Safety</b>	<b>05</b>
Safety equipment	
Safety regulations	
Safety instructions	
<b>4. Initial operation</b>	<b>07</b>
Checkpoints powersupply	
Checkpoints of machine	
<b>5. Operation</b>	<b>08</b>
Before switch on	
Switch on the machine	
Switch off the machine	
<b>6. Maintenance</b>	<b>09</b>
Changing the liners	
Changing the tune-up kit	
<b>7. Selection of abrasive</b>	<b>10</b>
<b>8. Technical data</b>	<b>11</b>
<b>Contact</b>	<b>12</b>

## 1. Index

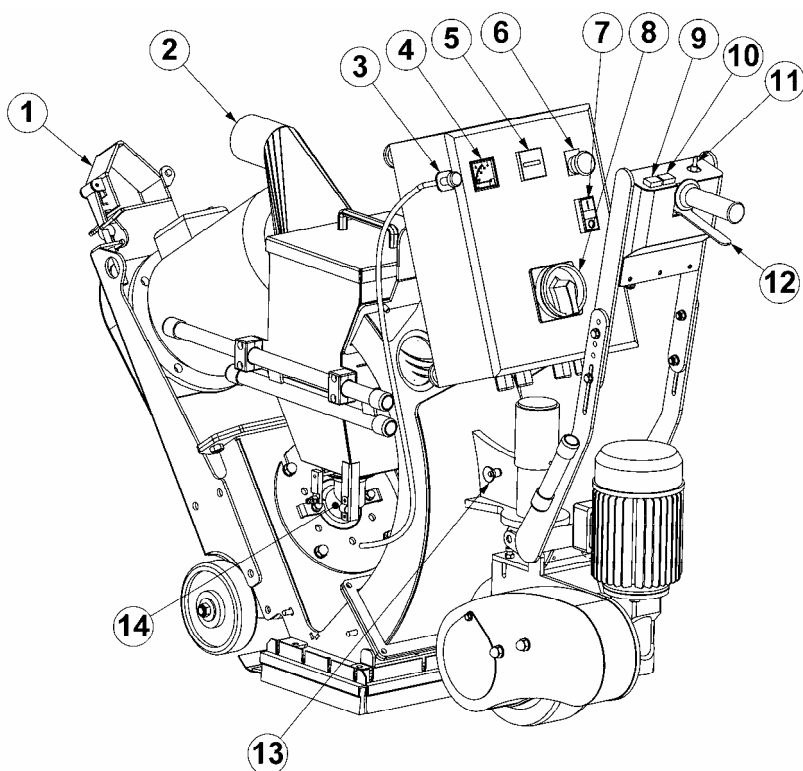
It is important that all persons operating and maintaining the machine read this manual carefully and understand it fully. Keep this manual near to the machine, so that it can be consulted every time.

Only authorized and trained personal may operate the machine.

## 2. Machine description

The **Blastrac** blast cleaning machine 1-10DPS75 is a downward blasting machine with a closed abrasive circuit designed for the pre-treatment of horizontal surfaces. The bouncing impact of metallic abrasive onto the surface to be treated thoroughly removes surface contaminants, coats of paint, sealants and thin coatings.

A suitable filter unit must be connected to the machine in order to separate the dust from the abrasive. A specially designed dust collection system ensures dust-free operation of the machine and clean air at the workspace.



- 1 Clamp for dust hose and electrical cable
- 2 Connection pipe for dusthose
- 3 Abrasive control cable
- 4 Ammeter blastmotor
- 5 Hour counter

- 6 Emergency shutdown switch
- 7 Push button blastwheel on/off
- 8 Main switch
- 9 Overdrive
- 10 Move forwards

- 11 Speed control
- 12 Travel switch
- 13 Quick release pin
- 14 Feed spout

### **3. Safety**

Before operating the machine, the personnel must be familiar with the safety instructions given in this manual. Only authorized and trained personal may operate the machine. Keep this manual near to the machine, so that it can be consulted every time.

#### **Safety equipment**

- The surface to be treated must be swept, remove stones, screws etc..
- Never use the machine when the surface is not clear and if there is a risk of stumble. The workplace must be good lighted.
- Remove electrical cables and dust hose from surface to be treated
- Work concentrated during operating the machine
- Always use a dustcleaner

#### **Safety regulations**

- Persons who do not operate the machine are not permitted to stay in the surrounding of the machine. Don't leave children anyway.
- Keep the machine original; Use cables who are approved and not damaged. Never remove the earth connecting of the supply cable and machine. Use only cables with earth wire and connectors with a earth connecting.
- Connect main power supply cable to a installation with a earth leakage circuit breaker.
- Inspect and test the electrical components of the machine regularly. This electrical components have to satisfy to the requirements EN60204-1.
- Always call a skilled electrician when you have questions about the safety of the electrical components.
- Work on electrical equipment or operating materials may only be undertaken by a skilled electrician or by trained persons under the guidance and supervision of a skilled electrician as well as in accordance with the electrical engineering regulations.
- Pull out the main plug during inspections and repairing on the machine.
- Never operate the machine when workplace is wet.
- Never stay in the rain with the machine.

Figure below is placed on the machine.



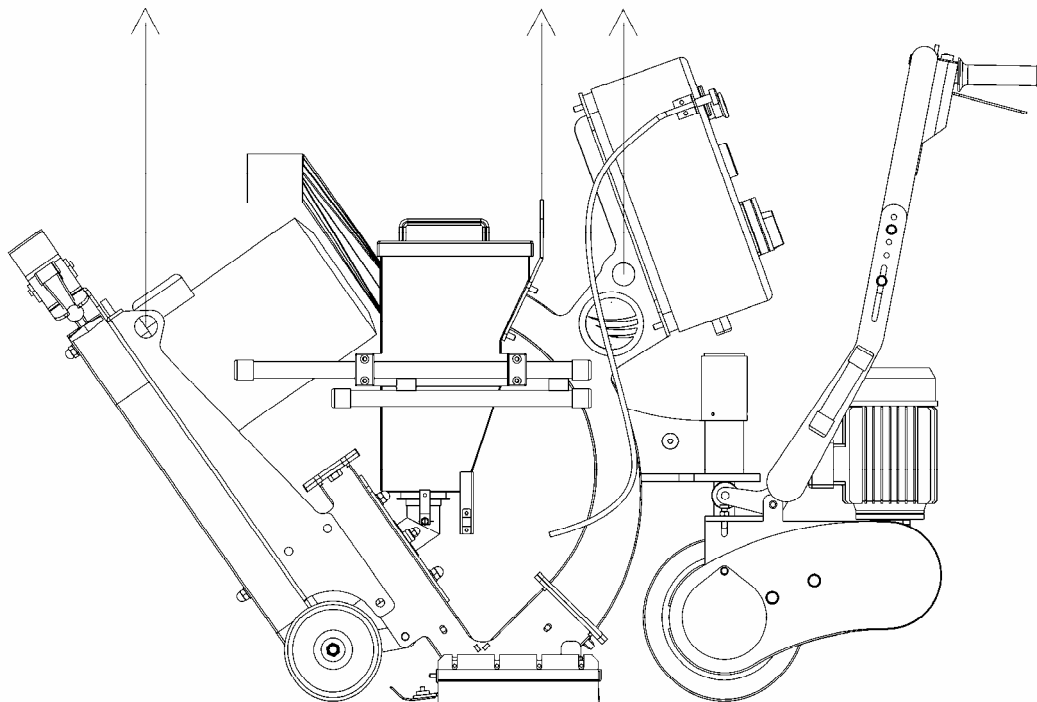
Meaning of the symbols:

- Ear protection is obliged
- Safety glasses with lateral protection is obliged
- CE-mark on this machine
- Safety shoes obliged
- Consult the manual before operating the machine.

Personnel must tie back long hair and not wear loose clothing or jewellery including rings. Wear gloves and dust mask during operating the machine.

### **Safety instructions**

- Abrasive can escape from the sides of the blast head at high speed. Wear safety glasses with lateral protection and close-fitting protective clothing.
- Be very careful with inserting the quick release pin
- The machine, specially the handle grip must be free of fats and has to be dry.
- The dust container of the filter unit must be emptied regularly. Comply with the local waste treatment regulations considering the removed material.
- The weight of the 1-10DPS75 is 211 kg. By transport the machine with a crane or lift, use the lifting eyes of the machine
- Pay attention that the drive unit do not turn away during lifting the machine.



## **4. Initial operation**

It is committed to inspect the machine before use it.

It is not permitted to use the machine if the machine safety is not according the checkpoints below.

### **Checkpoints powersupply**

- Use only extension cables for extending the main cable that are sized and marked in accordance with the overall power consumption of the machine.
- Electrical cables must be fully unwind of them reels.
- No damage is permitted for electrical cables.
- Use a electrical power supply connection with earth connecting.

### **Checkpoints of machine**

- Safety functions and operating functions must work correct.
- Check the following parts for damage and wear: blastwheel, feedspout, liners, magnet- and brush sealing.
- No loose bolts and nuts permitted
- No any damage of electrical components permitted.
- Dust hose must be undamaged and the connection must be reliable.
- Check de parts of the separator on wear and defects. Remove foreign bodies and dust deposits.

## **5. Operating**

To operate the 1-10DPS75 the following instructions are committed

### **Before switch on**

- Check if the distance from magnet to the floor is 6 – 8 mm. Check this height with aluminium strips.
- Check the distance from brush sealing to the floor. This may be max. 1 mm.
- Fill the separator equally with the selected abrasive up to the bottom of the separator tray. Magnetic valve must be closed whilst doing this.
- Connect the blastmachine and filterunit with the dusthose. This connection must be reliable.
- Connect the power supply cable of the filterunit with the generator. Be sure that electrical power supply is correct.

### **Switch on the machine**

- Before switch on the blastmachine, switch on the filterunit.
- Press the green push button "Blastwheel ON" and check the rotating direction of the blastmotor. The correct direction is given with a arrow on the housing of the motor.
- Select the speed using the speed control knob. (item 11 of machine description)
- When the machine is traveling pull the abrasive control cable to open the magnetic valve. Observe the ammeter. It may indicate the full load amperage. After having blasted aprox. 2 m, close the abrasive valve, stop the machine and check the blasted surface.
- If the 'hotspot' is too much on the right, turn clockwise the cage a little bit. Never adjust the cage during blasting.

### **Switch off the machine**

- Close the abrasive valve
- Press the red button "Blastwheel OFF"
- Switch the main switch to position "OFF"
- Pull out the connector of the main power supply of the machine.
- Switch off the filter unit.
- Wait for standstill of all drives before any inspection or maintenance works are started.



## **6. Maintenance**

### **Changing the liners**

- Loose the press bolt of the top liner and remove the cover.
- Loosen the nuts of the side liners and plenum liners. Take them out at the bottom of the housing.

To mount the liners, keep on the following sequence:

- First place the plenum liners and fix them with the nuts.
- Place the side liners inside the housing. The sideliners may stick out the body for max. 1mm. Tighten the nuts.
- Place the top liner in the housing and make sure that the top liner sits close to the edges of the side liners.
- Place the cover and tighten the bolts.
- Tighten the pressure bolt of the top liner slightly and press the top liner against the side liners.

### **Changing the tune-up kit**

De tune-up kit consists of the blastwheel, the cage and a bolt.

- Remove the feed spout
- Remove the cage clamps
- Remove the cage and blastwheel cover plate
- Block the blastwheel and remove the central fixing bolt
- Take the blastwheel out of the housing

Use a new central fixing bolt when mounting a new blastwheel

- Place the blastwheel on the hub and tighten the central fixing bolt.
- Fix the blastwheel cover plate with 4 nuts
- Insert the control cage in the center and clamp the cage with the control clamps so that the blastwheel can rotate freely
- Turn the blastwheel manually. It must rotate freely.
- Place the feed spout between the abrasive valve and the cage.

Clean the machine every day with air and non-aggressive materials. Never use a high pressure water cleaner to clean the machine.

Store the cleaned machine in a dry room. Protect the electrical motor from moisture, heat dust and shocks. Remove the abrasive out of the abrasive storage hopper.

All repair work has to be done by qualified Blastrac personnel, this guarantee a save and reliable machine.

Any guarantee on the machine is expired when:

- By not using original Blastrac spareparts and abrasive.
- When repair work is not done by qualified Blastrac personnel.
- When changes, add ons or conversions are undertaken without written permission of Blastrac BV.

## **7. Selection of abrasive**

### **Media nr. 2**

Is often used when the surface is only subsequently sealed.

- creates fine profiles, e.g. on vacuum concrete and non-glazed tiles
- removes thin layers of rust on steel surfaces
- removes thin layers of paint

### **Media nr. 3**

- creates a fine to medium texture on concrete.
- removes glazing from tiles prior to subsequently coating with antiskid floor sealings
- removes old impregnations and coatings about 1 mm thick

### **Media nr. 4**

Standard abrasive, suitable for about 50-60 % of all applications. Creates a medium profile on concrete. Fulfills the same purpose as Media No. 3 when a higher speed of the machine is required, e.g. on asphalt, in order to keep the thermal load low.

- removes laitance from new concrete
- roughening of smooth concrete or natural stone
- removes coatings with a thickness of 1-3 mm
- cleaning of steel surfaces

### **Media nr. 5**

This media is used to create a coarse profile or to increase the work speed in the case of surfaces hard to treat.

- removes sediments on concrete prior to coating
- removes thick paint coatings or rust from steel surfaces, bridges, tanks, etc.
- removes flexible coatings on parking house decks
- removes road markings and retexturing of asphalt and concrete roads

### **Media nr. 8**

Only as an addition to Media No. 3, No. 4 and No. 5 with maximum 30% content.

Media No. 8 should never be used without blending since otherwise the wear in the machine as a whole would increase disproportionately.

- removes polyurethane coatings
- removes adhesive remnants
- removes rubber deposits
- penetrates coatings hard to remove
- also suitable to be used on steel for extraordinary roughness

## 7. Technical data

	<b>1-10DPS75</b>		
Power consumption blastwheel motor	7,5 kW		
Electrical connection (voltage is given on the control box)	3x230V / 60 Hz 400V / 50 Hz 400V / 60 Hz		
Blast width	254 mm		
Drive speed	0 – 30 m/min		
Max. blast cleaning output on concrete	120 m <sup>2</sup> /h		
Abrasive consumption	<100 gr/m <sup>2</sup>		
Length	1590 mm		
Width	400 mm		
Hight	1020 mm		
Weight	211 kg		
Noise level	Over 85dB(A)		
Dust hose connection	75 mm Ø		
Suitable filterunit	Contact Blastrac BV we will assist you with a good advice		

Design and specifications are subject to change without notice by Blastrac BV

**Main office**

*Blastrac BV The Netherlands  
Utrechthaven 12  
NL - 3433 PN Nieuwegein  
Tel: 0031 (0)30 601 88 66  
Fax: 0031 (0)30 601 83 33  
info@blastrac.nl*

*Blastrac United Kingdom  
Unit 2, Outgang Lane, Dinnington  
Sheffield, South Yorkshire  
GB - S25 3QU, England  
Tel: 0044 (0) 1909 569 118  
Fax: 0044 (0) 1909 567 570  
info@blastrac.co.uk*

*Blastrac France  
ZI  
29, Avenue des Temps Modernes  
F - 86360 Chasseneuil du Poitou  
Tel: 0033 (0)5 49 00 49 20  
Fax: 0033 (0)5 49 00 49 21  
info@blastrac.fr*

*Blastrac Spain  
Calle Copernico, 16  
Nave 2  
E - 28820 Coslada  
Tel: 0034 91 660 10 65  
Fax: 0034 91 672 72 11  
info@blastrac.com.es*

*Blastrac Germany  
Mathias Brüggens Straße 144  
D - 50829 Köln (Ossendorf)  
Tel: 0049 (0) 221 70 90 32 0  
Fax: 0049 (0) 221 70 90 32 22  
info@blastrac.de*

*Blastrac Poland  
Golina, Dworcowa 47a  
63-200 Jarocin  
Tel: 0048 62 740 40 27  
Fax: 0048 62 740 40 27  
info@blastrac.pl*

