

**IMPORTANT** Read these instructions before use. Save instructions & packaging.

Use Vac-It Panels with your HP60 or HP-PLUS system to dry wet materials such as: hardwoods, subfloors, tile, headers, plaster walls, and even concrete. These panels are made of durable and low maintenance ABS plastic and come in a variety of configurations to meet your drying needs.

It's quick and easy! This system pulls moisture through the flutes out of the wet materials by using negative air pressure.

We suggest using preservation tape to secure edges of panel to surface (safety) and to ensure a consistently good seal.



6886271 patent pending

### **SAFETY WARNINGS**

Safety warnings are located on page 2

# SAFETY WARNINGS

## CAUTION

The ambient and suction temperatures should be between 40° C and 104° F. This includes air under a containment and which can be sucked into the blower. Such high heat stresses motors and blowers. Windings and wiring can overheat, become brittle and even short-out due to extreme heat. Failure to operate the HP at or below an ambient temperature of 104° F (40° C) WILL VOID THE WARRANTY.

**FAILURE** to prevent bulk water from passing through the HP blower can cause severe damage to the internal workings of the blower and **WILL VOID THE WARRANTY**.

**WHEN DRYING NEGATIVELY (AIR IN):** Prior to running the HP and before applying vacuum pressure to the material, attach panel hoses to truckmount or portable extractor, or Injectidry's Water Separator for at least 30 minutes or until no more bulk water appears from beneath panels.

**WHEN DRILLING:** Know what you're drilling into. Cavities can contain electrical, plumbing and other services. It is highly recommended a drill stop be used.

Due to probable high heat output, the Silencer should be elevated from surfaces that could be damaged by heat.

Protect the floor surface from possible damage by placing the HP on a pad or blanket.

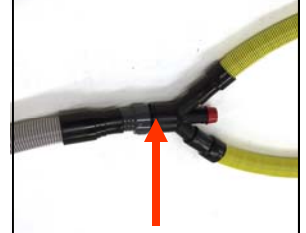


## GRAY & BLACK WATER

Operators should follow current IICRC S500 Water Damage Restoration Standards at a minimum.

## DO NOT USE YOUR SYSTEM AS AN EXTRACTION DEVICE

Purchase an HB300 to simplify your connection between your HP system and portable/truckmount vacuum system.



INTRODUCTION.....	1
SAFETY WARNINGS.....	2
NEGATIVE DRYING.....	3
TYPES OF PANELS.....	4 - 5
EXAMPLES BEFORE, DURING & AFTER SETUPS.....	6 - 7
WARRANTY.....	8
CUSTOMER SERVICE.....	8

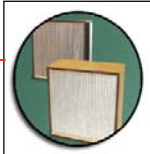
# NEGATIVE DRYING

The goal is to remove moisture from the area of entrapment. Negative pressure (suction) drying can accomplish the air exchanges necessary to dry hardwood. Air movement caused by negative pressure, supplies a vehicle for moisture to leave. Absent an airflow through the trapped area, the ambient humidity within the space will rise to saturation. With suction applied to the airspace, the wet air will be drawn out of the flooring system. The suction will induce lower vapor pressure air into the flute system which will support and suspend moisture moving from the wet materials.

The effort should be to move the moisture and contamination to a known location where no damage can happen. This can be accomplished by negatively pressurizing the cavity (interstitial space) by removing air from the area(s). The air can then be processed through a HEPA filter system, or moved to the exterior of the built environment. Unless an inline HEPA filter is used before the blower, the main unit can become contaminated. This approach is preferred by most industrial hygienists.



Rated 99.97% Efficient





## TYPES OF VAC-IT PANELS

There are several types of Vac-It Panels. One type has 3/8" tubing connections and the other has 1-1/2" hose cuff connections. See chart below to see the differences with the panels. Some panel types have a gasket to make a better seal. We recommend taping ALL panels to reduce the trip hazard, and ensure a good seal. You will have approximately 10% more pressure if panels are sealed.



**U KIT**  
Order # PUK  
formerly **VACITPA-PUK**

**8 POINT PANELS**  
Order # 8-P-5 or 8-P-10  
formerly **VACITPA-8**

**CLEAR PANELS**  
Order # CL  
formerly **VACITPA-CL**

**MULTI-PORT PANELS**  
Order # MP  
formerly **VACITPA-MP**



**SLIM PANEL**  
Order # SP-SP

## TYPES OF VAC-IT PANELS

PART #	SIZE	MADE OF	PORT SIZE	GASKET	QTY	DESCRIPTIVE
8-P-5 or 8-P-10	46" x 30"	ABS	3/8" Tubing	NA	5 pak or 10 pak	General purpose panel, can be cut down to make specialty size panels.
PUK	(1) U Panel & (2) 6.75" x 22.75" Panels, & (1) 6"x14" Panel	ABS	3/8" Tubing	YES	Single	Fits toilets, doorways, small areas. Extraction points are located to one side of the panel, minimizing trip hazards. Gasket allows for tighter seal.
CL	46" x 30"	PTEG	1-1/2" Hose Cuff	YES	5 pak	Allows view of moisture coming out of material being dried, great as a demonstration tool.
MP	46" x 30"	ABS	3/8" Tubing or 1-1/2" Hose Cuff	YES	6 pak	High traffic areas, such as doorways. Extraction port is located on one side of the panel, minimizing trip hazards. Gasket allows for tighter seal.
SP-SP	17" x 46"	ABS	3/8" Tubing	YES	9 pak	
VP	See above	See above	See above	See above	See above	(6) MP's, (01) 8 Points, (01) PUK Kit, (01) CL, (08) End Cap Plugs, (40) RP2's and (08) Vac-T's

## SETTING UP THE PANELS

Once you have chosen to use Vac-It Panels to dry a surface material determine the amount of foot traffic during the dryout. Always keep the amount of possible trip hazards to a minimum and ensure you post signs alerting everyone to the possible dangers. Even if the traffic is limited to work crews, the danger should be noted.

Before laying out the panels, consider where the HP unit will be placed in order to configure the best positioning of the equipment such as the hoses (minimizing walkways, doorways and etc.). Then place the panels on the surface and double check your placement.

It is not necessary to cover the entire area to be dried. The Vac-It Panels can be placed 2-3' from each other and in most cases will pull the moisture out of the material between them (along the flute lines). We do recommend covering 100% of the floor across the width of the wet areas, as the flutes do not go across the width.

Install the Vac-It Panels over the areas to be dried. Do not tape the panels down yet, but attach a truck mount or a portable extractor if available and extract for at least 15 - 20 minutes. After extracting the standing water, use the Water Separator for first 24 hours. **Ingesting bulk liquid will void the warranty on HP blowers.** After determining there is no more water to come out from beneath the panels in liquid form, tape the panels down to increase suction and minimize chance of slipping on panels.



We always recommend taping down Vac-It Panels, even if they have a gasket. If you don't tape them down, you risk:

- A) creating a slippery, dangerous environment causing someone to fall.
- B) dislodging the panel from the floor, breaking the seal thereby compromising the dryout.

\*We recommend using a tape called PRESERVATION TAPE to seal the Vac-It Panels to the floors, as it is less sticky but strong enough to hold the panel to the floor. By gently pulling up a corner of the taped panel, you can often check moisture readings without applying more tape.



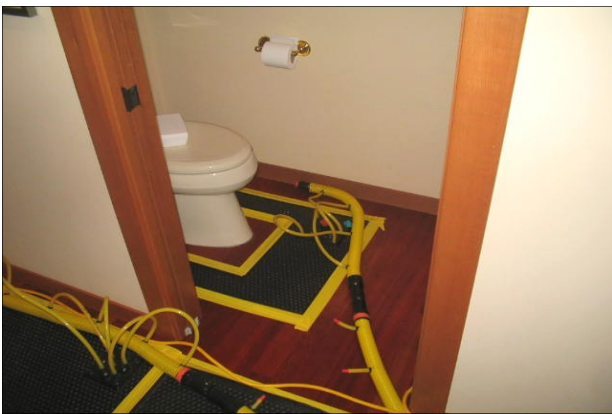
Water Separator

Each job varies as to the number and type of panels needed. Various panel sizes are available to customize the setup. The large port panels (Multi Port, Large Clear and Panel U Kit – aka PUK) are easier and faster to set up with fewer trip hazards in a large space. There are many variables that make each job unique:

- moisture content
- the thickness and quality of finish on the surface
- the type of substrate
- whether or not the substrate is affected and to what degree



# EXAMPLE OF PANEL SETUPS



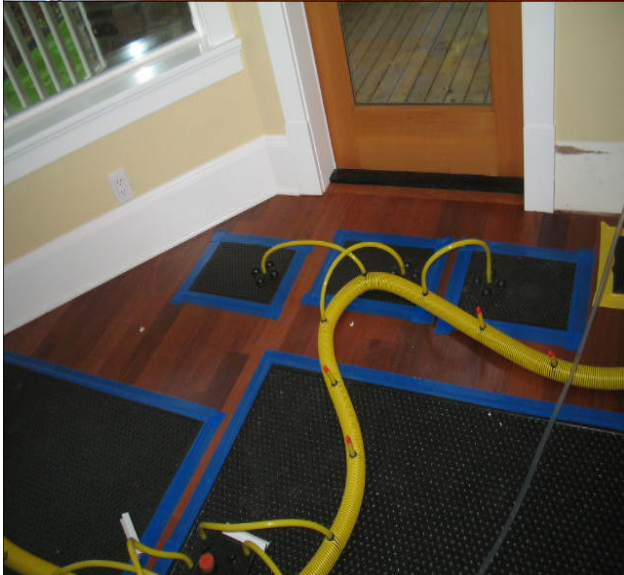


## EXAMPLE OF PANEL SETUPS

With Injectidry panels many floors can be dried without the need to replace or refinish. These floors were screened and recoated--no sanding necessary.



**BEFORE**  
Wet Floors



**DURING**  
Combination of 8 Point (which were modified by cutting between the grid sections) & Multi-Port Panels



**AFTER**  
Dry Floors





# Warranty

## Coverage

The warranty extends to the original end-user of the Vac-It 8, MP, VP, PUK, CL panels and is not transferrable.

## 1st Year - Conditions of Warranty

Injectidry Systems guarantees that, for the first year the Panels will operate free of any defects in materials and workmanship, or Injectidry Systems, Inc. will, at its discretion, repair or replace the defective part(s), free of any charge (excludes any gasketing that may tear or rip). During the first year, Injectidry Systems will cover all material, labor, and shipping costs to and from the service center.

## After the 1st Year

The customer is responsible for all parts, labor and shipping costs after one (1) year from the original date of purchase.

**Limitations & Exclusions:** The warranty includes legal rights to the original purchaser, and additional rights may be available, varying state to state. The customer must contact Injectidry Systems for authorization to return any materials for Repair and/or all repairs must be completed by an Authorized Repair Center. The warranty obligation extends only to the repairs or replacement of parts found to be defective upon the examination and the decision of Injectidry Systems. This warranty will not extend to Injectidry products showing any accidental damage, alteration, normal wear, disassembly, lack of proper maintenance, damage from fire or flood, damage from corrosive or other chemicals, improper voltage use, unauthorized repairs, use of non-genuine parts and materials, misuse, or any other causes beyond the control of Injectidry. The proceeding limitations constitute the entire warranty. No other warranty or responsibility is expressed or implied Injectidry Systems is not responsible for any repairs or modifications to any of its products, unless completed by Injectidry Systems or an Authorized Repair Center.

# CUSTOMER SERVICE

## Return for Repair Request

You can obtain a Request for Repair Form by calling 800.257.0797 or by going to our website for a form on the "Contact Us" page.

## Return Request

You can obtain a Request for Return Form by calling 800.257.0797 or by going to our website for a form on the "Contact Us" page.

## Incomplete Shipments

All shortages must be reported within five business days.

Be sure to check the number of cartons or packages. You can compare this count with the total listed on Bill of Lading. Confirm that you have received all cartons or packages pertaining to this shipment.

If quantities do not match, have the delivery driver note shortage. If the missing cartons or packages do not show up in the next few days, contact the Shipping Department and we will reship on a new order.

You must file a Freight Claim for shorted packages if the count differs from the Bill of Lading. For your protection, the carrier who delivers merchandise to your door is responsible for any loss or damages. Acceptance of the shipment by the carrier company is acknowledgement that the articles were delivered to them were in good condition and properly packaged.

## Freight Damage

Injectidry Systems is not responsible for freight damage. We will assist you in filing a freight claim. The shipper must be notified within 48 hours or by the next business day.

Immediately upon receiving the shipment, note all damage with the driver or on the waybill. If damages are found after the packaging is opened, call the transportation company to report the concealed freight damage and request an inspection.

If the shipment arrived via LTL, contact [shipping@injectidry.com](mailto:shipping@injectidry.com) with the pro # and the details of the problem(s).

If the shipment arrived via UPS small packages, visit our website for freight claims procedures [www.injectidry.com](http://www.injectidry.com) or go to the following UPS link for filing a claim [https://wwwapps.ups.com/webClaims/create?loc=en\\_US&report\\_type=1](https://wwwapps.ups.com/webClaims/create?loc=en_US&report_type=1)

DO NOT throw away the packaging, as it would be needed for filing a freight damage claim. Injectidry or the shipper will reimburse for approved and validated claims that are paid by the transportation carrier. If you do not follow these procedures we may not be able to assist you in recovering the lost value.