



# *Brush Pro I7*

*Carpet Cleaning Machine and Pile Lifter*

## *Operator's Manual*

**HF HYDRO-FORCE**

Please read the Operator's Manual completely before using the Brush Pro, and pay close attention to the safety advice.



## INSTRUCTIONS

Your Brush Pro 17 carpet cleaning machine is designed to give you excellent performance and satisfaction throughout its life. Reading this manual will help you get the most from its features and capabilities.

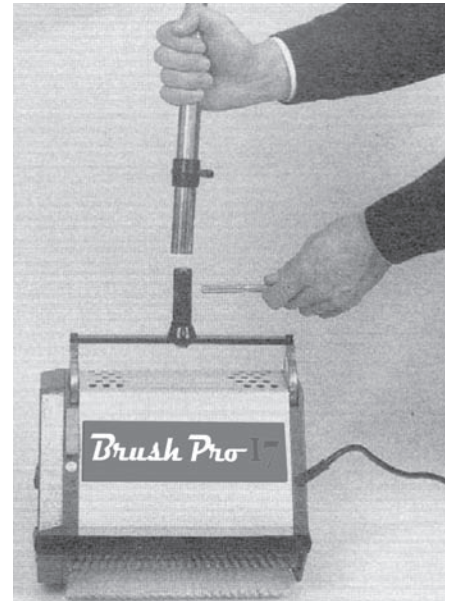
---

### ASSEMBLY

In the shipping box you will find the machine base (shipped with two standard brushes installed), dirt receptacles, dust covers and two or three pieces to make the handle.

Place the handle on the bolt and screw both parts together.

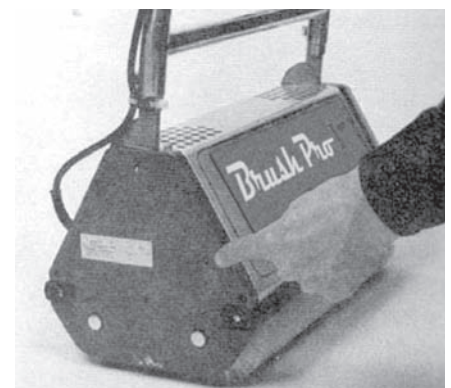
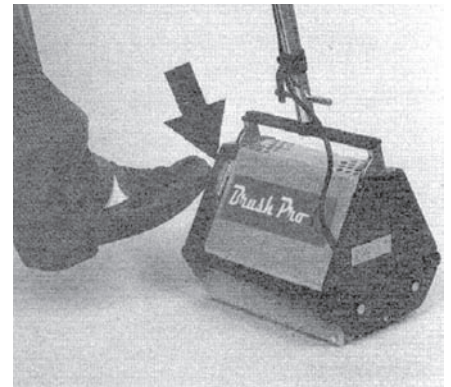
***Do NOT plug in the power cord before assembly is finished.***

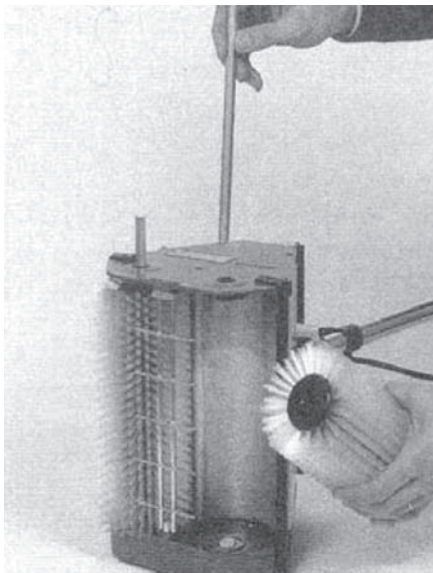


---

### OPERATIONS

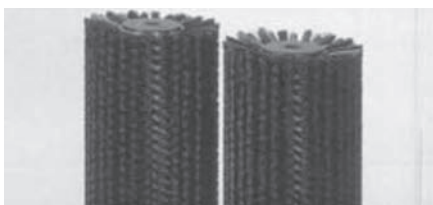
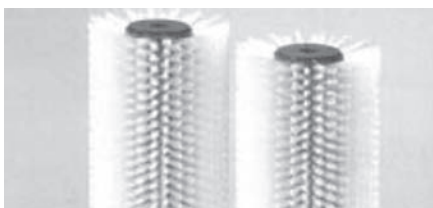
- 1 Plug the power cord into a standard 110V outlet. Press the safety catch on the handle. The motor starts when the handle is simply tilted. Fix the electric in the clip provided on the handle. This largely protects it from the rotating brushes.
- 2 Motor safety switch: the safety switch automatically cuts off the electricity if the motor becomes overloaded. After approximately 30 seconds, press the button again and continue to work.





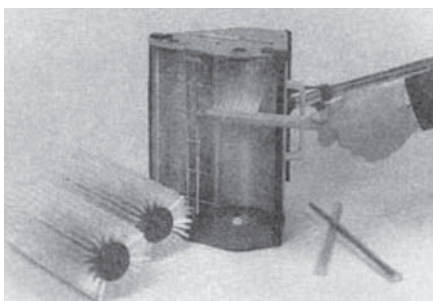
## CHANGING/REMOVING BRUSHES

- 1 Unplug the power cord from the outlet.
- 2 Stand the machine on its gear side housing (opposite side of the power cord end of machine). Tilt the machine to the side. (As illustrated)
- 3 Pulling out the clips releases the brushes. Reach under with finger and push axles up into machine. Pull axles straight up and out. No tools are required if the machine is kept clean and the brushes are removed and rotated end-to-end on a regular basis.



## BRUSH SELECTION

- MH51W Black:** Soft bristle brush – for use on delicate, natural fibers such as wool or extra deep pile.
- MH51B White:** Standard / residential brush – for use on all synthetic fibers and constructions. To be used on most common applications and moderate soil load.
- MH51C Brown:** Commercial / aggressive brush – for use and pile lifting on commercial, low cut pile and loop pile. Use on heavy soil load and where pile lifting is needed.



## CLEANING & MAINTENANCE

**Caution:** The machine must be unplugged from the power outlet immediately after use, and before cleaning or exchanging the brushes.

- 1 After each use and completion of the cleaning operation, tilt the machine to the side (as shown), and remove both brushes. Remove any remaining dirt with a small brush or cloth. Rotate brushes every 2-3 hours of operation. (Prolongs brush life and protects against gear damage.)
- 2 **Place the Brush Pro 17 machine on storage tray/trolley or lay the machine on its side when not in use to prevent brush damage.**



Note: DO NOT LUBRICATE AXLES – KEEP CLEAN AND DRY

---

## TROUBLESHOOTING

### PROBLEM

### SOLUTION

---

**Q** Machine does not start and makes NO noise.

**A** Wait 30 seconds if the machine is warm. Push the motor protector reset button (on the side of the machine). Use a small object, like a pencil, to be sure to press it in far enough. (illustrated — Operations #2)

---

**Q** Machine does not start and makes a grunting sound.

**A** Tilt the machine toward the foot pedal end of the machine, and allow the brushes to rotate at full speed before lowering the machine slowly back onto the carpet.

---

**Q** Only one brush turns.

**A** One or more gears have stripped and need to be replaced before use. (Consult your local distributor).

---

**Q** The machine turns on when the handle is in the upright and locked position.

**A** Replacement of the foot pedal is needed. (Consult your local distributor.)

---

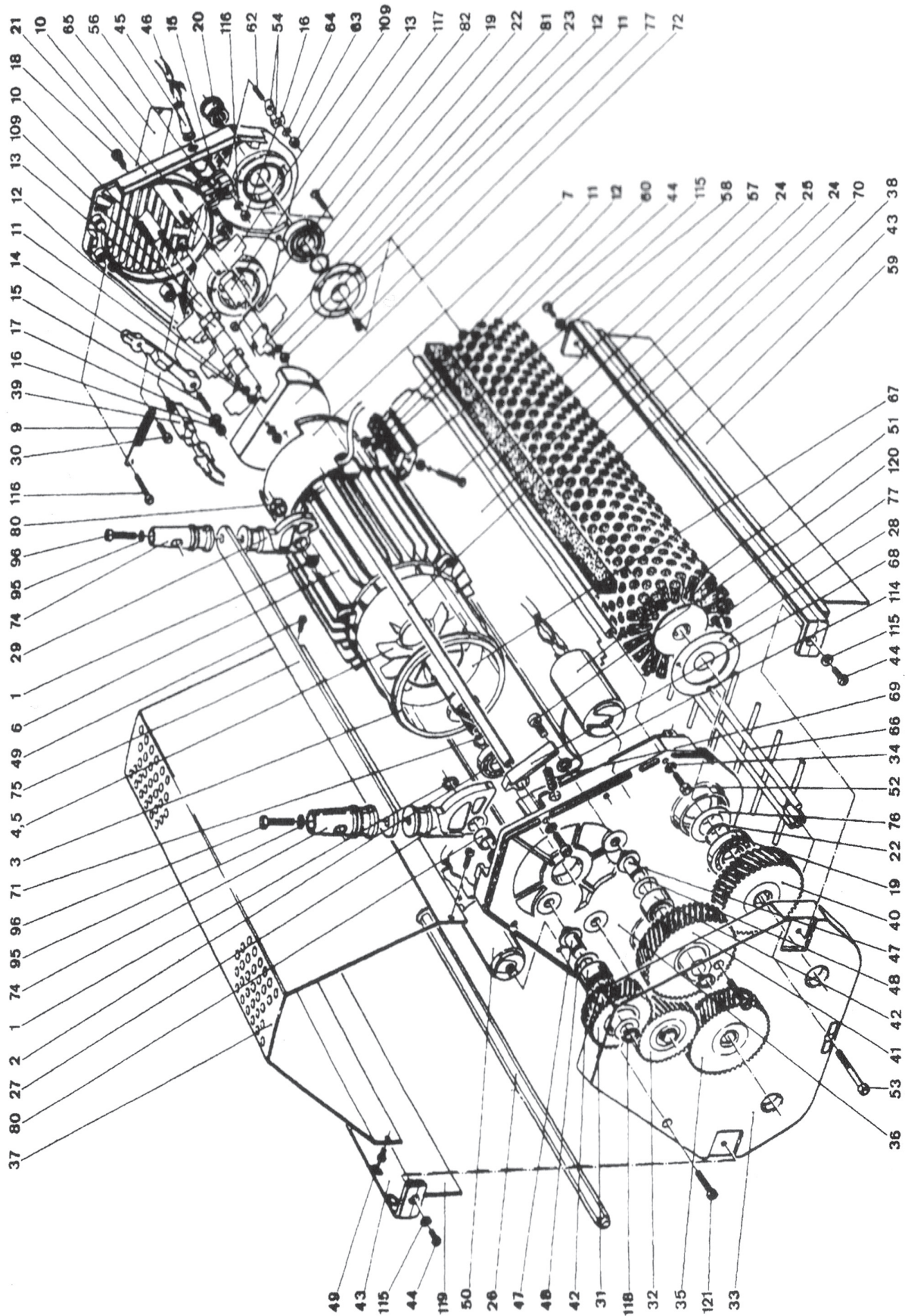
**Q** The machine bounces roughly when in use.

**A** Inspect the brushes for directional set from scrubbing in one direction too long.

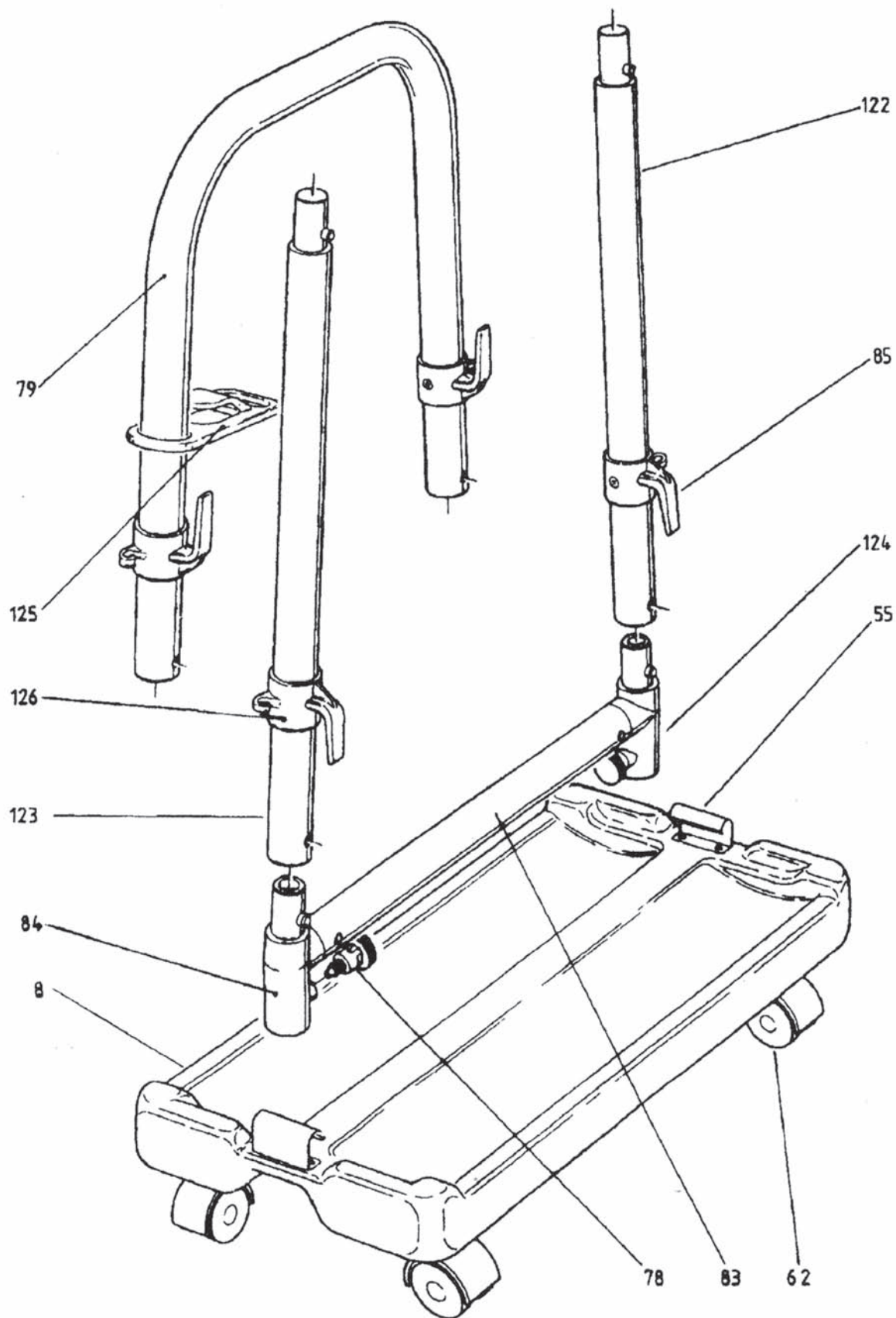
- Inspect the axles and brush end caps for wear which will cause a vibration.
- NOTE: To prevent directional set, rotate both brushes end-to-end. Always perform this action at day's end or after 2–4 hours of continuous use.



# BRUSH PRO 17 – SCHEMATIC

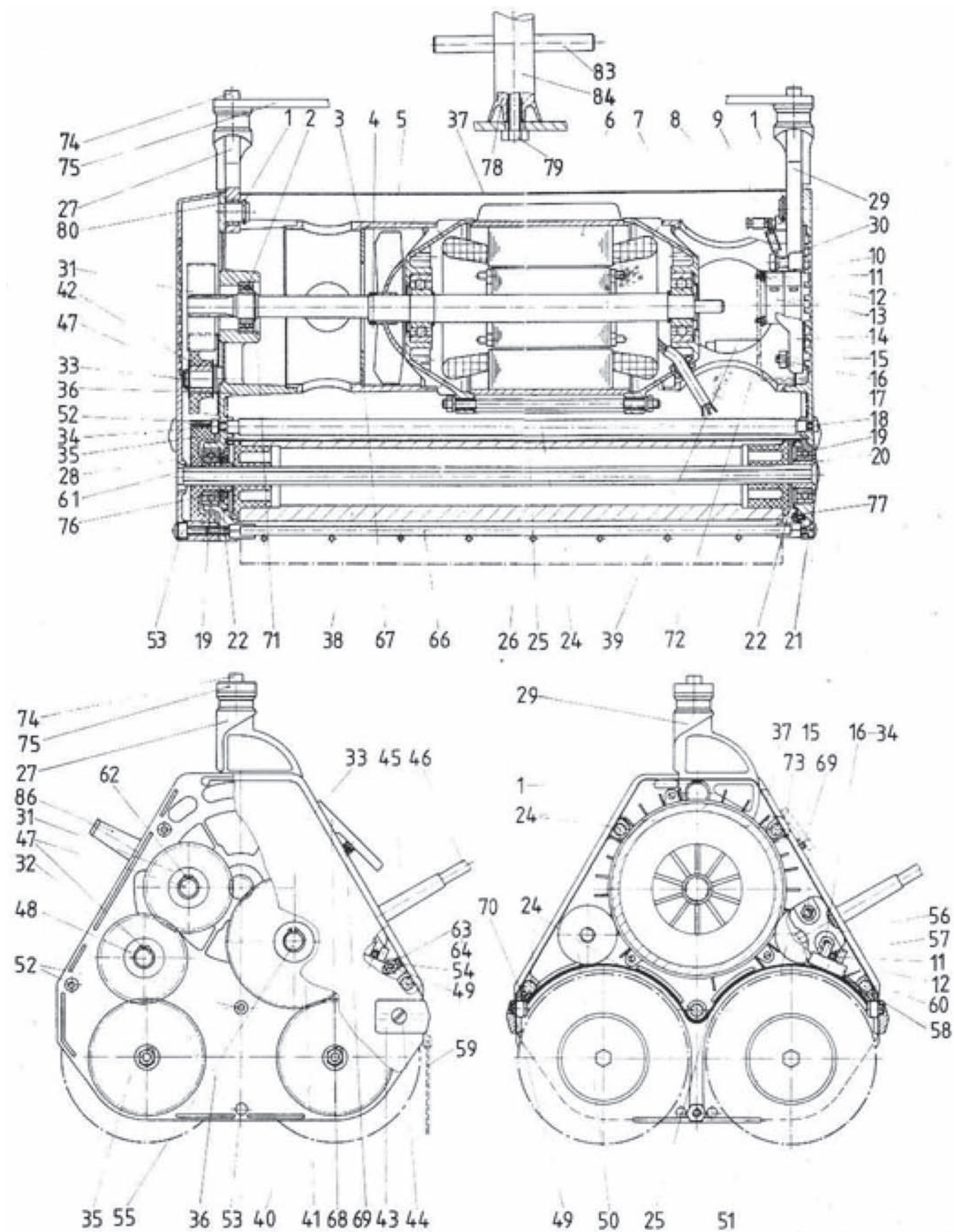


BRUSH PRO 17 – MACHINE HANDLE & TROLLEY





# BRUSH PRO 17 – SCHEMATIC VIEWS





## TECHNICAL DETAILS

**Motor**..... ½ hp/800W  
**Power Cord** ..... 4" 16AWG with ground  
**Cord Length**..... 50' 14AWG extension cord  
**Brush Speed** ..... 480 rpm  
**Weight**..... 42.33lb.  
**Height** ..... 8.5"  
**Overall Depth** ..... 9.5"  
**Cleaning Width**..... 15"

For servicing and repairs please contact our service technicians at the address or numbers below or consult your nearest distributor or dealer.

## CAUTIONS /SAFETY ADVICE

- Always disconnect power cord from the wall outlet before changing brushes, maintenance tasks, lifting the machine off the floor or servicing.
- Keep away from water.
- Inspect the power cord prior to each use for abrasions or cuts—if cuts are found, replace the cord before use and handling.
- This machine has counter rotating brushes:
- Do not run the machine over electrical, telephone or computer cables.
- Do not leave the machine plugged in the power outlet when unattended.
- Keep children away.
- Keep out of reach of children.
- Ensure the handle is in its upright position and the lock is working correctly prior to connecting the machine to the power supply.
- Do not run the Brush Pro 17 machine over loose carpet fibers or edges of rugs or carpet matting.
- **Always store the machine in the storage tray/trolley to protect the brushes.**

**It is the user's responsibility to operate this machine / appliance safely and carefully. Hydro-Force Manufacturing does not assume any liability.**

## PARTS

### Part# Description

1	Snapring A12
2	Ballbearing 6002-RS
3	DistancepieceG
5	Ventilator
6	Motor RBF 18/2-7PR
7	Distancepiece E
8	Trolley cpl.
13	Microswitch
14	Switchpart
19	Ballbearing 6003-2RS
20	Flange
21	Housing unit E cpl.
22	Retaining ring A 17
23	Protective plate
24	Motorstud
25	Brush cover
26	Brush axle
27	Handle connector lower part G
29	Handle connector lower part E
30	Screw M6x16
31	Gear 48 right
32	Gear 48 left
33	Gear cover
34	Lock washer M 5
35	Gear 66 right
36	Housing unit G cpl.
39	Thermorelay
40	Gear 66 left
41	Gear 73 right
42	Ballbearing 6000

**Brush Pro I7**  
Carpet Cleaning Machine and Pile Lifter

**HF HYDRO-FORCE**

HYDRO-FORCE MANUFACTURING  
542 West Confluence Ave. | Salt Lake City, Utah 84123  
801-268-2673 | 1-800637-3789 | 801-268-3856 FAX