

Owner's Manual — Hydro-X Xtreme Xtractor

Installation, Operation & Service Instructions

Read and Save These Instructions

The Phoenix Hydro-X Xtreme Xtractor is the most effective and efficient extraction tool on the market today. The Hydro-X's patented Suction Roller provides both suction and compression — forcing water to the surface then sucking the water away, not allowing the water to be reabsorbed back into the carpet and pad. No other extractor today can pull as much water from the carpet and pad as the Hydro-X Xtreme Xtractor.

The Hydro-X is steerable and self-propelled with variable speeds. One restoration technician can operate the unit and extract 1200 sq. ft. of carpet and pad in approximately 2 hours*!

Patents:
6,152,151
6,629,333

The Phoenix Hydro-X Xtractor

- Patented suction roller provides both suction and compression forcing water to the surface.
- Self-propelled with positive chain drive – no belts to break or adjust
- Variable speed for every carpet and pad condition
- Extracts in both forward and reverse
- Rust and corrosion resistant stainless steel construction
- Built to withstand daily use
- Heavy-duty electronics
- One year warranty on parts and labor



**Time may vary depending on carpet style.*

Specifications subject to change without notice.

**Phoenix Hydro-X
Xtreme Xtractor
Part No. 4025600**

TS-298c
06/10

Table of Contents

Introduction	1
1. Specifications.....	2
2. Setup Instructions	2
3. Operating Instructions.....	3
3.1 Steering	3
3.2 Directional Control.....	3
3.3 Movement Control.....	3
3.4 Speed Control.....	3
4. Basic Extraction Technique	3
5. Other Information	3
5.1 Vacuum Units.....	3
5.2 Troubleshooting.....	3
6. Service Parts	4
Warranty.....	5

Read the operation and maintenance instructions carefully before using this unit. Proper adherence to these instructions is essential to obtain maximum benefit from your Phoenix Hydro-X Xtractor.

WARNING

- It is designed to be used **INDOORS ONLY**.
- If used in a wet area, plug it into a **GROUND FAULT INTERRUPTER**.
- It must always be used in the upright position.

CAUTION

CAUTION: Key must be lined up correctly when plugging handle into base assembly. Improper connection can result in damage to connector pins, blown fuses or incorrect product operation.

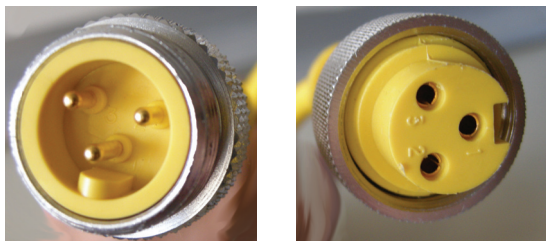


Figure 1a

1 Specifications

Part No.	4025600
Power	2.5 amps; 110-120 VAC grounded, 60 hz
Speed	0 - 28 Feet/Minute (Adjustable) Either forward or reverse
Drive Motor	2.0 Amps
Fuse	5.0 Amp 250 VAC
Warranty	One year; 100% Parts and Labor
Dimensions	

	Machine	Shipping
Width	17" (Base)	27-1/2"
Height	52"	45-1/2"
Depth	20.5" (Base)	22"
Weight	70 lbs	80 lbs

2 Setup Instructions

To set up the Phoenix Hydro-X Xtreme Xtractor, unpack the two boxes in which the unit was shipped.

1. Connect the wheel assembly to the extraction assembly by inserting the square tube attached to the wheel assembly into the square receiver and secure with the supplied hitch pin.
2. Connect the handle assembly to the assembled base section by inserting the square tube of the handle into the square receiver located at the top of the wheel assembly. Secure the handle to the base assembly with the supplied hitch pin.
3. Connect the black electrical leads together by inserting the base assembly lead into the handle assembly lead and tightening the collar. See figure 1a.

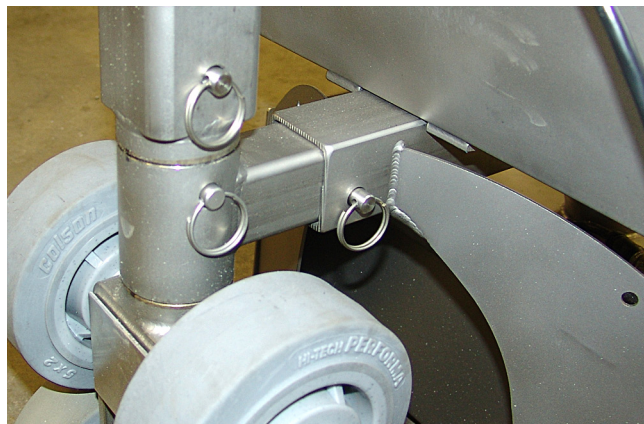


Figure 1: Tube and receiver connections secured by hitch pins

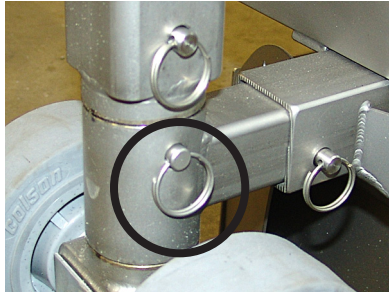
3 Operating Instructions

The speed, movement and directional controls are located on the control box at the top of the handle assembly.

3.1 Steering

To steer the Hydro-X Xtreme Xtractor, remove the middle hitch pin on the wheel/base assembly. When finished extracting, moving or transporting the Hydro-X, be sure the reinstall to hitch pin.

Figure 2: Remove the center hitch pin to steer the Hydro-X during extraction



3.2 Directional Control

Select the “Forward” or “Reverse” switch to set the desired direction of movement. When the Forward/Reverse switch is in either movement position, the machine will begin motion when the handle on the handle grip is depressed.

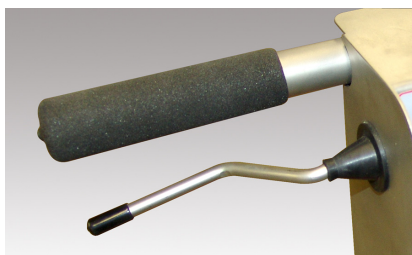
Figure 3: Directional controls feature forward, reverse and off. In the “off” setting the Hydro-X will not move when the movement lever is depressed.



3.3 Movement Control

Depress the handle on the left handle grip to begin movement. Always start movement on the Hydro-X with the speed control set to “Slow.” Depressing the movement handle when the Hydro-X speed control is set to “Fast” may cause the operator to lose their balance as the machine will start moving quickly. Before changing from Forward to Reverse or vice versa, release the motion handle.

Figure 4: Compress the movement handle when ready to begin extraction.



3.4 Speed Control

The knob marked “Fast/Slow” controls the speed of movement from 1 to 28 feet per minute. Recommended speed for extracting water from berber is slow. Recommended speed for cut pile is fast.

Figure 5: The Hydro-X can move from 1 to 28 feet per minute with the use of the speed control knob.



4 Basic Extraction Technique

! IMPORTANT

If there is more than 1” of standing water in the area to be extracted, a sump pump should be used to remove standing water.

Start in corner of room - extract one pass forward and one pass back. Pull corner of carpet back to inspect pad. If no water splashes when jumped on with foot, two passes are sufficient for extraction. If there is water splash, make another pass and re-check. After determining the number of passes required, extract entire room.

5 Other Information

5.1 Vacuum Units

For maximum extraction, the recommended vacuum unit is the Phoenix Hydro-X Vacuum Pac. However, if using a truck mounted vacuum unit, a 2” hose must be used from truck to the Phoenix Hydro-X Xtreme Xtractor. Using a portable vacuum unit other than the Phoenix Hydro-X Vacuum Pac is not recommended.

5.2 Troubleshooting

This chart suggests common answers to problems with your Hydro-X. The information is not all-inclusive and does not necessarily apply in all cases. If unusual operating conditions, or other problems occur, obtain technical assistance from the manufacturer.

If the unit fails to operate:

No Power - Check home circuit breakers or receptacle with circuit tester.

Blown Fuse or Open Breaker - Replace fuses or reset circuit breaker. Inspect for damaged wiring.

GFCI Tripped - After plugging in GFCI and machine power cord, press “RESET” button on GFCI.

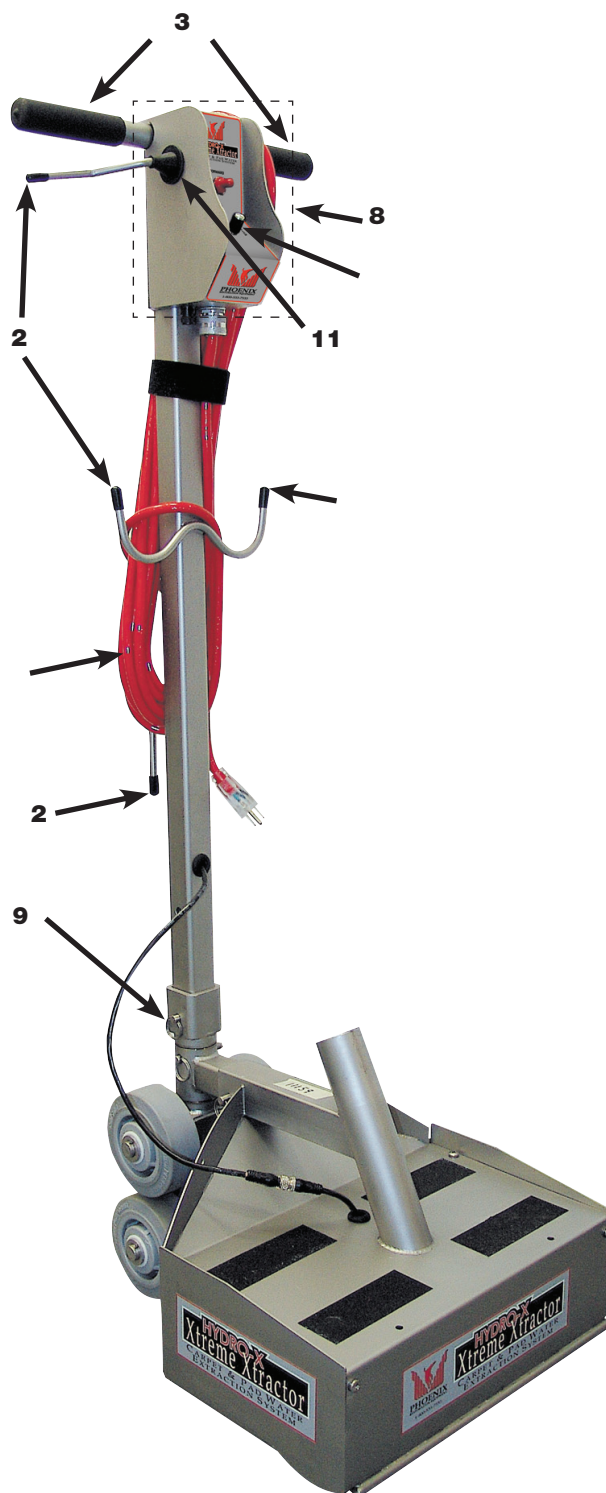
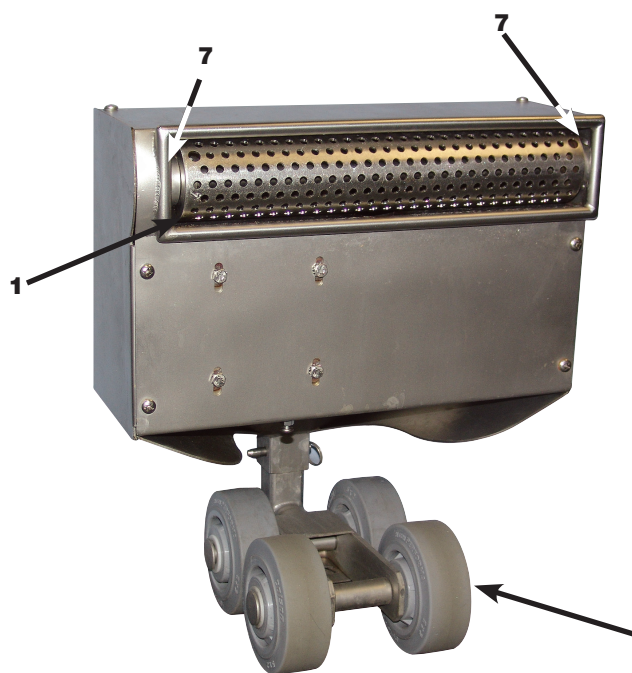
Loose Motor Connections - Check handle to motor lead connection.

6 Service Parts

Item	Description	Qty	Part Number
1	Perforated Roller	1	4025619
2	Handle Protector Cap	3	4025677
3	Handle Grips	2	4025599
4	Speed Control Knob	1	4025606
5	Transport Wheels	4	4025626
7	Suction Roller Axle Bearings	2	4025587
8	Control Panel Assembly	1	4025593
9	Hitch Pin	2	4025621
10	Replacement Power Cord	1	4025594
11	Handle Lever Boot	1	4025678

Items available but not shown:

Fuse (5A)	1	4025704
Drive Motor	1	4030137
Internal Handle Switch	1	4025624



Phoenix Hydro-X Xtractor Limited Warranty

Warrantor:

Therma-Stor LLC
4201 Lien Rd
Madison, WI 53704
Telephone: 1-800-533-7533

Who Is Covered: This warranty extends only to the original end-user of the Phoenix Hydro-X Xtractor dehumidifier, and may not be assigned or transferred.

Year One: Therma-Stor LLC warrants that, for one (1) year the Phoenix Hydro-X Xtractor will operate free from any defects in materials and workmanship, or Therma-Stor LLC will, at its option, repair or replace the defective part(s), free of any charge.

End-User Responsibilities: Warranty service must be performed by a Servicer authorized by Therma-Stor LLC. If the end-user is unable to locate or obtain warranty service from an authorized Servicer, he should call Therma-Stor LLC at the above number and ask for the Therma-Stor Service Department, which will then arrange for covered warranty service. Warranty service will be performed during normal working hours.

The end-user must present proof of purchase (lease) upon request, by use of the warranty card or other reasonable and reliable means. The end-user is responsible for normal care. This warranty does not cover any defect, malfunction, etc. resulting from misuse, abuse, lack of normal care, corrosion, freezing, tampering, modification, unauthorized or improper repair or installation, accident, acts of nature or any other cause beyond Therma-Stor LLC's reasonable control.

Limitation and Exclusions: If any Phoenix Hydro-X Xtractor part is repaired or replaced, the new part shall be warranted for only the remainder of the original warranty period applicable thereto (but all warranty periods will be extended by the period of time, if any, that the Phoenix Hydro-X Xtractor is out of service while awaiting covered warranty service).

UPON THE EXPIRATION OF THE WRITTEN WARRANTY APPLICABLE TO THE PHOENIX HYDRO-X XTRACTOR OR ANY PART THEREOF, ALL OTHER WARRANTIES IMPLIED BY LAW, INCLUDING MERCHANTABILITY AND FITNESS FOR A PARTICULAR PURPOSE, SHALL ALSO EXPIRE. ALL WARRANTIES MADE BY THERMA-STOR LLC ARE SET FORTH HEREIN, AND NO CLAIM MAY BE MADE AGAINST THERMA-STOR LLC BASED ON ANY ORAL WARRANTY. IN NO EVENT SHALL THERMA-STOR LLC, IN CONNECTION WITH THE SALE, INSTALLATION, USE, REPAIR OR REPLACEMENT OF ANY HYDRO-X XTRACTOR OR PART THEREOF BE LIABLE UNDER ANY LEGAL THEORY FOR ANY SPECIAL, INDIRECT OR CONSEQUENTIAL DAMAGES INCLUDING WITHOUT LIMITATION WATER DAMAGE (THE END-USER SHOULD TAKE PRECAUTIONS AGAINST SAME), LOST PROFITS, DELAY, OR LOSS OF USE OR DAMAGE TO ANY REAL OR PERSONAL PROPERTY.

Some states do not allow limitations on how long an implied warranty lasts, and some do not allow the exclusion or limitation of incidental or consequential damages, so one or both of these limitation may not apply to you.

Legal Rights: This warranty gives you specific legal rights, and you may also have other rights which vary from state to state.

