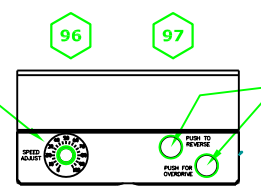


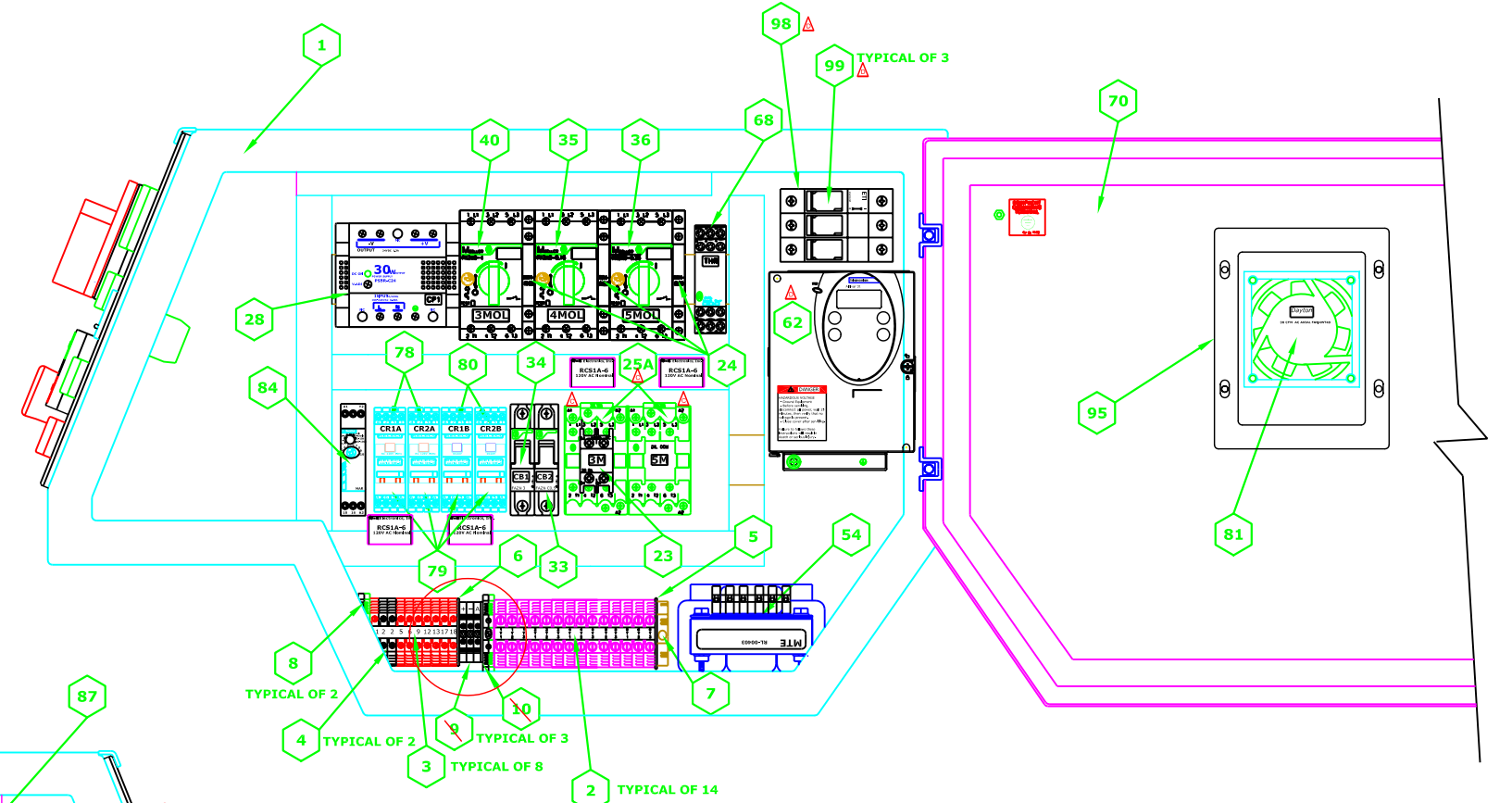
A B C D E F G H I J

1 2 3 4 5 6 7 8

UMBILICAL

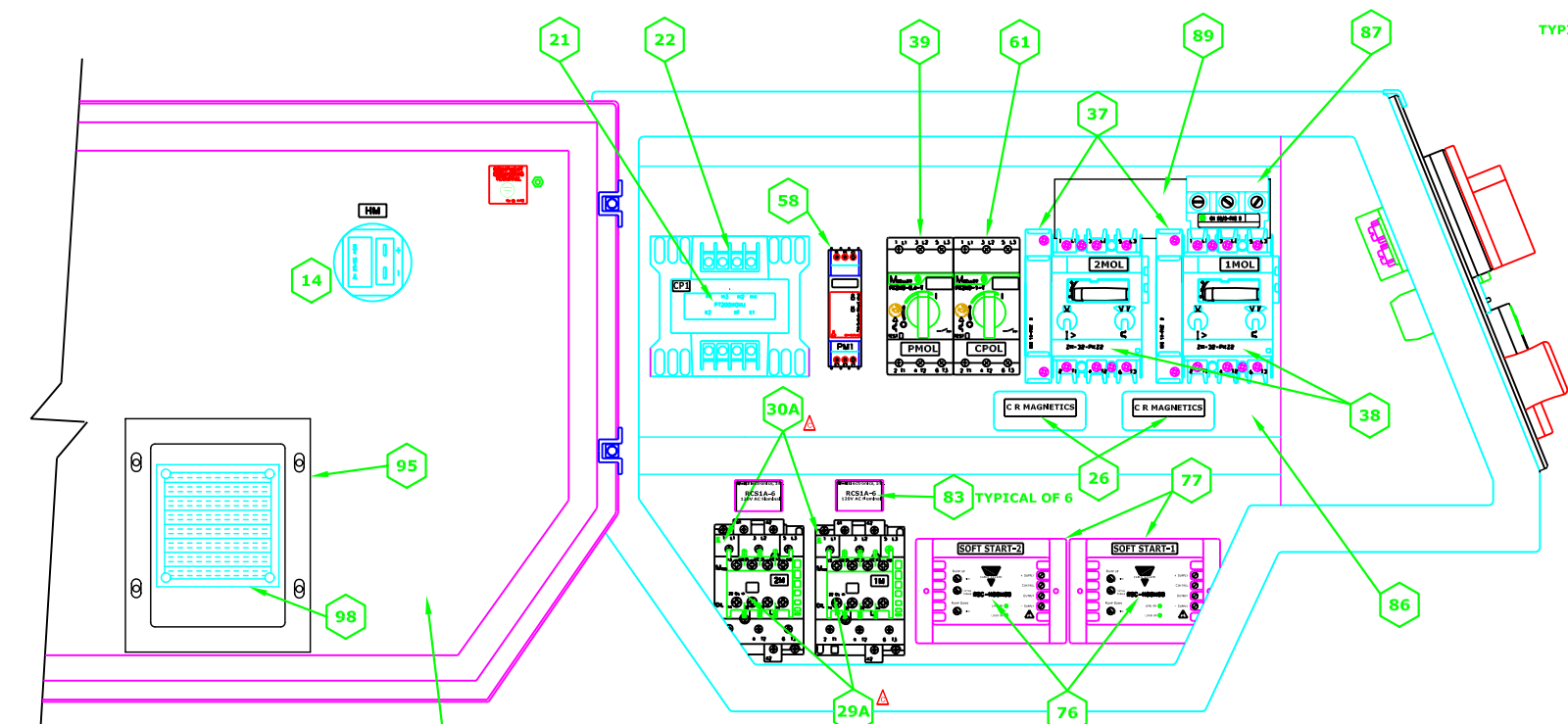


POT POD



RIGHT VIEW

SEE SHEET 5 OF 5 FOR DETAIL OF OVERLOAD DEVICE SETTINGS



LEFT VIEW

REV	DESCRIPTION	DATE	BY
A	REVISED TERMINAL NUMBERS FOR NEW VFD (P004268) WHICH REPLACES OBSOLETE VFD (P000955) AND ADDED FUSE BLOCK AND FUSES. CHANGE BEGINNING WITH UNIT SERIAL NUMBER 3089-1206-37. COMPLETE RETROFIT KIT INCLUDING ALL REQUIRED COMPONENTS IS PN P004271	4/3/07	ML
B	REVISED BILL OF MATERIAL TO REFLECT CHANGE OF PART NUMBERS OF CONTACTORS DUE TO MANUFACTURING CHANGE BEGINNING WITH UNIT SERIAL NUMBER 3089-0306-28. TERMINAL NUMBERS IN PARENTHESES REPRESENT ANY NEW DEVICE TERMINAL NUMBERS.	1/06/06	OS
C	ADDED DETAIL ON SHORT CIRCUIT CURRENT RATING ACCORDING TO UL508A, SUPPLEMENT 5B. EFFECTIVE BEGINNING APRIL 25, 2006.	10/19/05	ML
D	ADDED DETAIL ON MAXIMUM BRANCH CIRCUIT PROTECTION TYPE AND RATINGS PER CHANGES TO UL508A, SECTION 60.1 EFFECTIVE APRIL 25, 2003.	10/22/04	ML

REVISION

THIS DRAWING AND THE DESIGN SHOWN THEREIN IS THE PROPERTY OF BLASTRAC AND USE OR COPIES THEREOF CANNOT BE MADE WITHOUT WRITTEN CONSENT.

FIRST USED	REF DWG	415-0015	PART NO	P003089
------------	---------	----------	---------	---------

TOLERANCE
UNLESS SPECIFIED

ANGLES ± 1°
FRACTIONS ± 1/16
2 PL DEC ± .06
3 PL DEC ± .005

BLASTRAC 13201 N. SANTA FE OKLAHOMA CITY, OK 73114 U.S.A.

2-20D/ 2-30D/DSMKIII 460 60Hz
PANEL LAYOUT

SCALE NTS DRWN OS
DATE 9-10-03 SHT 4 OF 5

415-0015

A B C D E F G H I J

8