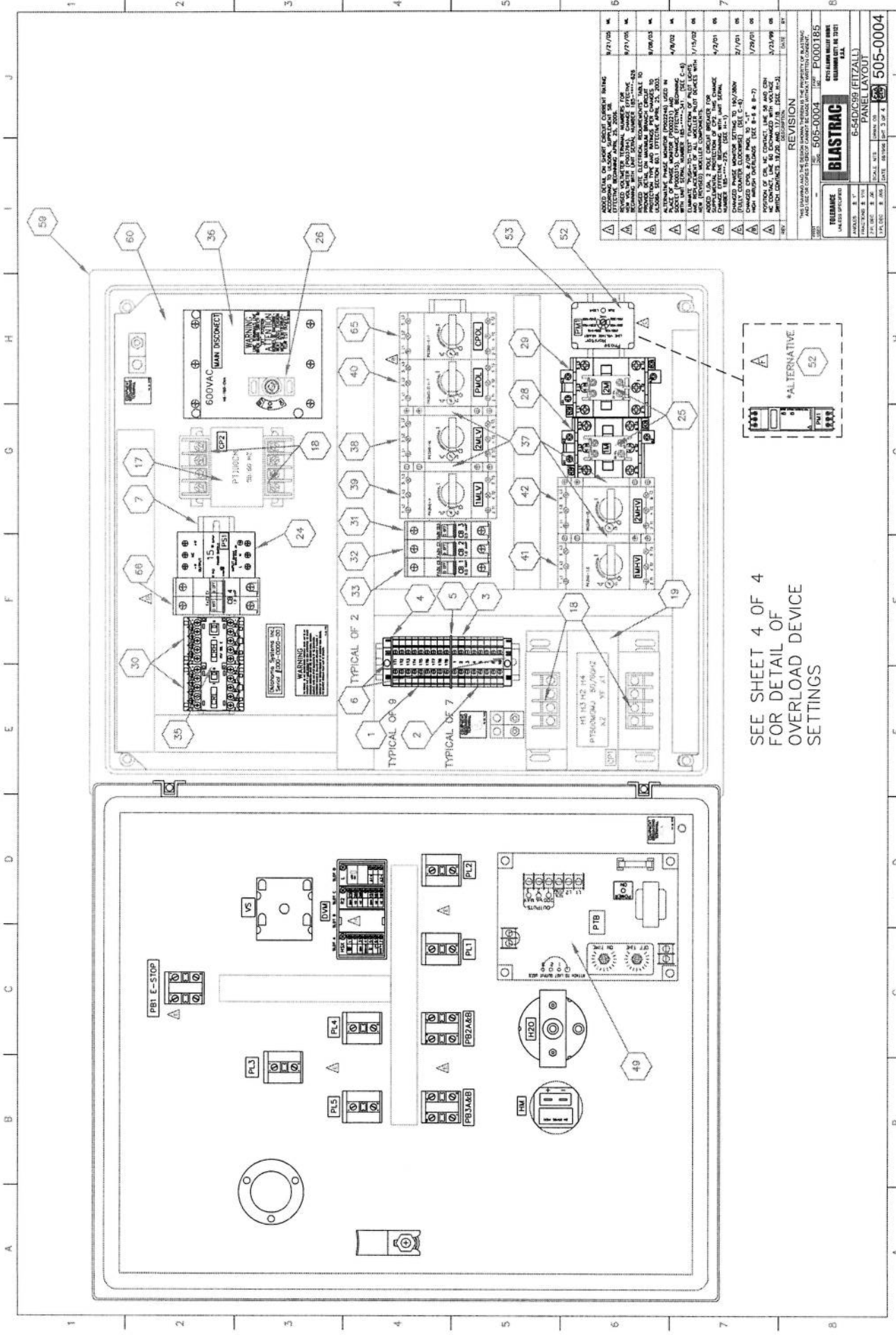


505-0004 6-54DC99 DUST COLLECTOR
208/480V, 3 PHASE, 60 HZ

ITEM NO.	QTY	USF PN	DESCRIPTION
1	9	717053	TERMINAL BLOCK, BLACK
2	7	717051	TERMINAL BLOCK, RED
3	1	717052	TERMINAL BLOCK, WHITE
4	1	717048	TERMINAL BLOCK, END BARRIER, KBL6-10 TERMINAL BLOCK
5	1	717049	TERMINAL BLOCK, ISOLATION PARTITION
6	4	717045	TERMINAL BLOCK, END ANCHOR, TERMINAL BLOCK, 35 MM
7	1	P000161	DIN RAIL, 35MM
8	1	P000190	VOLTMETER, DIGITAL, 600V, 48VDC PS, DUAL RELAY
ALTERNATIVE			
8	1	P003764	VOLTMETER, DIGITAL, 600V, DC PS, DUAL RELAY (SEE REV. H)
9			NOT USED
10	1	P000144	HOURLY METER, 120V, 50/60 HZ (HM) W/GASKET
11	1	716842	RECEPTACLE, 60 AMP, 480 V, 4 WIRE, 3 POLE, PANEL MOUNT
12			NOT USED - SEE REV E
13			NOT USED - SEE REV E
14	1	P002217	PILOT LIGHT, GREEN LENS, GREEN LED (CONTROL POWER) (PL3)
15	1	P000323	SHACKLE/ SCREW PIN, 3/8"
16	3	493410	VALVE, SOLENOID, 120 VAC, 50/60 HZ (SV1, SV2 & SV3)
17	1	P000195	XFMR, 480 V PRI x 240 V SEC, 100 VA, 60 HZ (CP2)
18	4	P000147	XFMR, TERMINAL COVER (2-CP1 & 2-CP2)
19	1	P000196	XFMR, 240/480-120 SECONDARY, 500VA, 60 HZ (CP1)
20	1	P000140	CONNECTOR, BULKHEAD HOUSING (600V) w/COVER
21	1	P000141	CONNECTOR, HOOD (600V), SIDE ENTRY, PG21
22	1	P000142	CONNECTOR, MALE INSERT, 10 PIN, (600V), W/ CAGE CLAMP TERM
23	1	P000143	CONNECTOR, FEMALE INSERT, 10 PIN, (600V), W/ CAGE CLAMP TERM
24	1	P000197	POWER SUPPLY, 24 VDC, 15 W (PS)
25	2	P000198	AUX CONTACT, 2 NO, TOP MOUNTED, (1M & 2M)
26	1	716820	SWITCH, DISCONNECT EXTENSION (MAIN)
27	1	P000158	BUS FEEDER CONNECTOR, 3 PHASE
28	1	P000199	CONTACTOR (COMPRESSOR) 120 VOLT, 50/60 HZ (1M)
29	1	P000200	CONTACTOR (FAN) 120 VOLT, 50/60 HZ (2M)
30	2	P000201	RELAY/ FOR SENSING "VOLT SELECT", 3PNO, 1PNC (CRH, CRL)
31	1	P000202	CIRCUIT BREAKER/ POWER SUPPLY SECONDARY, 0.5 AMP (CB3)
32	1	P000203	CIRCUIT BREAKER/ 2:1 XFMR SECONDARY, 1.0 AMP (CB2)
33	1	716814	CIRCUIT BREAKER/ CPT SECONDARY, 6.0 AMP (CB1)
34	1	716819	SWITCH/ DISCONNECT, HANDLE (MAIN)
35	1	P000204	RELAY, MECHANICAL INTERLOCK (BETWEEN CRH & CRL)
36	1	716818	SWITCH/DISCONNECT, 160AMP (MAIN)
37	4	716826	AUX CONTACT, (1 NO/1 NC) FOR EACH MCP (FOR 1MHV, 1MLV, 2MHV & 2MLV)
38	1	P000209	MCP FOR FAN (2MLV)
39	1	716824	MCP FOR COMPRESSOR (1MLV)
40	1	P000207	MCP/ CIRCUIT PROTECTOR, 0.25 - 0.4 AMP, HIGH INRUSH (PMOL)
41	1	P000208	MCP FOR COMPRESSOR (1MHV)
42	1	716821	MCP FOR FAN (2MHV)
43	2	P002211	SWITCH, DOUBLE PB OPERATOR W/ 1NO & 1 NC CONTACT
44	2	P002221	PILOT LIGHT, AMBER LENS, WHITE LED, 120VAC
45	1	P002218	PILOT LIGHT, GREEN LENS GREEN LED, 24VDC
46	1	P002220	PILOT LIGHT, RED LENS RED LED, 24VDC
47	1	P002224	SWITCH, E-STOP, LATCHING, PULL TO RELEASE, 2 NC
48	1	P000213	SWITCH, SELECTOR, MOTOR/CPT VOLTAGE "HIGH-OFF-LOW" (VS)
49	1	487270	TIMER, DC PULSE, 120V, 50/60 HZ, ON - 50-500 MS, OFF - 1.5 - 30 SEC (PTB)
50	1	691949	STRAIN RELIEF, DOUBLE EYELET, 1-1.25" (DC END POWER CORD)
51	1	P000156	CORD GRIP, 0.86"-1.26", 1 1/2" NPT, (INPUT POWER)
52	1	P000221	RELAY, PHASE SEQUENCE/LOSS, SELF POWERED, 200/480 V, 50/60 HZ (PM)
ALTERNATIVE			
52	1	P002246	RELAY, PHASE MONITOR, 208-480 VOLT, AUTORANGING. ALTERNATIVE FOR ITEM 52 & 53. SEE REVISION F.
53	1	P000315	SOCKET, RELAY FOR PHASE SEQUENCE MONITOR (PM)
54	2	P001045	CONNECTOR, SEALTITE, 1/2" 45 DEG (COMPRESSOR)
55	2	P001040	SEALTITE, 1/2", FLEXIBLE (2)
56	1	P001047	CONNECTOR, SEALTITE, 3/4" 90 DEG ELBOW (FAN)
57	1	P003081	CONNECTOR, SEALTITE, 3/4" X PG21, 90 DEG
58	4	P001041	SEALTITE, 3/4", FLEXIBLE (4)
59	1	P000148	ENCLOSURE, 19.7 W X 23.6 H X 7.9 D
60	1		ENCLOSURE, BACKPANEL FOR 6-54
61	40	P000330	WIRE, 600V, 14 AWG
62	30	P000331	WIRE, 600V, 16 AWG
63	75	P000332	WIRE, CABLE, 4 AWG, 4 CONDUCTOR, TYPE W
64	1	676556	WATER GAGE, DIFFERENTIAL PRESURE GAGE 1-10 INCHES W.C.
65	1	P002023	MCP/ CIRCUIT PROTECTOR, 2.4 - 4 AMP, HIGH INRUSH (CPOL)
66	1	P002024	CIRCUIT BREAKER/ 2:1 XFMR PRIMARY, 2 POLE, 1.0 AMP (CB4)



SEE SHEET 4 OF 4
FOR DETAIL OF
OVERLOAD DEVICE
SETTINGS

NO.	REVISION	DATE	BY
1	ISSUE	1/17/04	W
2	ADDED NOTES ON SAFETY CIRCUIT CURRENT RATING ACCORDING TO UL508A, APPLICATIONS FOR 150 AMP PANELS. REFER TO THE RELEVANT SECTION OF THE PANEL LAYOUT FOR THE SAFETY CIRCUIT CURRENT RATING.	1/17/04	W
3	REMOVED 150 AMP SAFETY CIRCUIT CURRENT RATING FROM THE PANEL LAYOUT. REFER TO THE RELEVANT SECTION OF THE PANEL LAYOUT FOR THE SAFETY CIRCUIT CURRENT RATING.	1/17/04	W
4	ADDED 150 AMP SAFETY CIRCUIT CURRENT RATING TO THE PANEL LAYOUT. REFER TO THE RELEVANT SECTION OF THE PANEL LAYOUT FOR THE SAFETY CIRCUIT CURRENT RATING.	1/17/04	W
5	ADDED 150 AMP SAFETY CIRCUIT CURRENT RATING TO THE PANEL LAYOUT. REFER TO THE RELEVANT SECTION OF THE PANEL LAYOUT FOR THE SAFETY CIRCUIT CURRENT RATING.	1/17/04	W
6	ADDED 150 AMP SAFETY CIRCUIT CURRENT RATING TO THE PANEL LAYOUT. REFER TO THE RELEVANT SECTION OF THE PANEL LAYOUT FOR THE SAFETY CIRCUIT CURRENT RATING.	1/17/04	W
7	ADDED 150 AMP SAFETY CIRCUIT CURRENT RATING TO THE PANEL LAYOUT. REFER TO THE RELEVANT SECTION OF THE PANEL LAYOUT FOR THE SAFETY CIRCUIT CURRENT RATING.	1/17/04	W
8	ADDED 150 AMP SAFETY CIRCUIT CURRENT RATING TO THE PANEL LAYOUT. REFER TO THE RELEVANT SECTION OF THE PANEL LAYOUT FOR THE SAFETY CIRCUIT CURRENT RATING.	1/17/04	W

TELEPHONE UNLESS SPECIFIED 505-00004	BLASTRAC 6-54/DIG99 (FITZALL) PANEL LAYOUT
DRAWN BY: W CHECKED BY: W DATE: 1/17/04	PROJECT NO: 505-00004 SHEET NO: 4 OF 4

