

\\SW00447.global.hvwan.net\SE\JONZ_WP_Folder\Redirect\H513026\Desktop\PGRC\ACE\2016-11-08\PGRC Autocad 2016_April_ver HPG820_680 RC - 02 - Main drawing.dwg

A	Initial design	CHB	---	2015-03-26
B	New drawing head & major changes	DC	---	2015-04-09
Rev.	Description	Design	Check	Date

Husqvarna

This drawing is our exclusive property and is to be returned on request. It must not in any form be used to the prejudice of our interests. ©

Design By
MR

Checked By
CHB

Approved By

Date
2015-03-26

Title

Concrete Floor Grinder
Main Drawing
PG820/680 RC EU/US

Items shown in this drawing must not contain substances classified as "banned" or "restricted" according to the Husqvarna Group Restricted Materials List (see www.purchase.husqvarna.com)

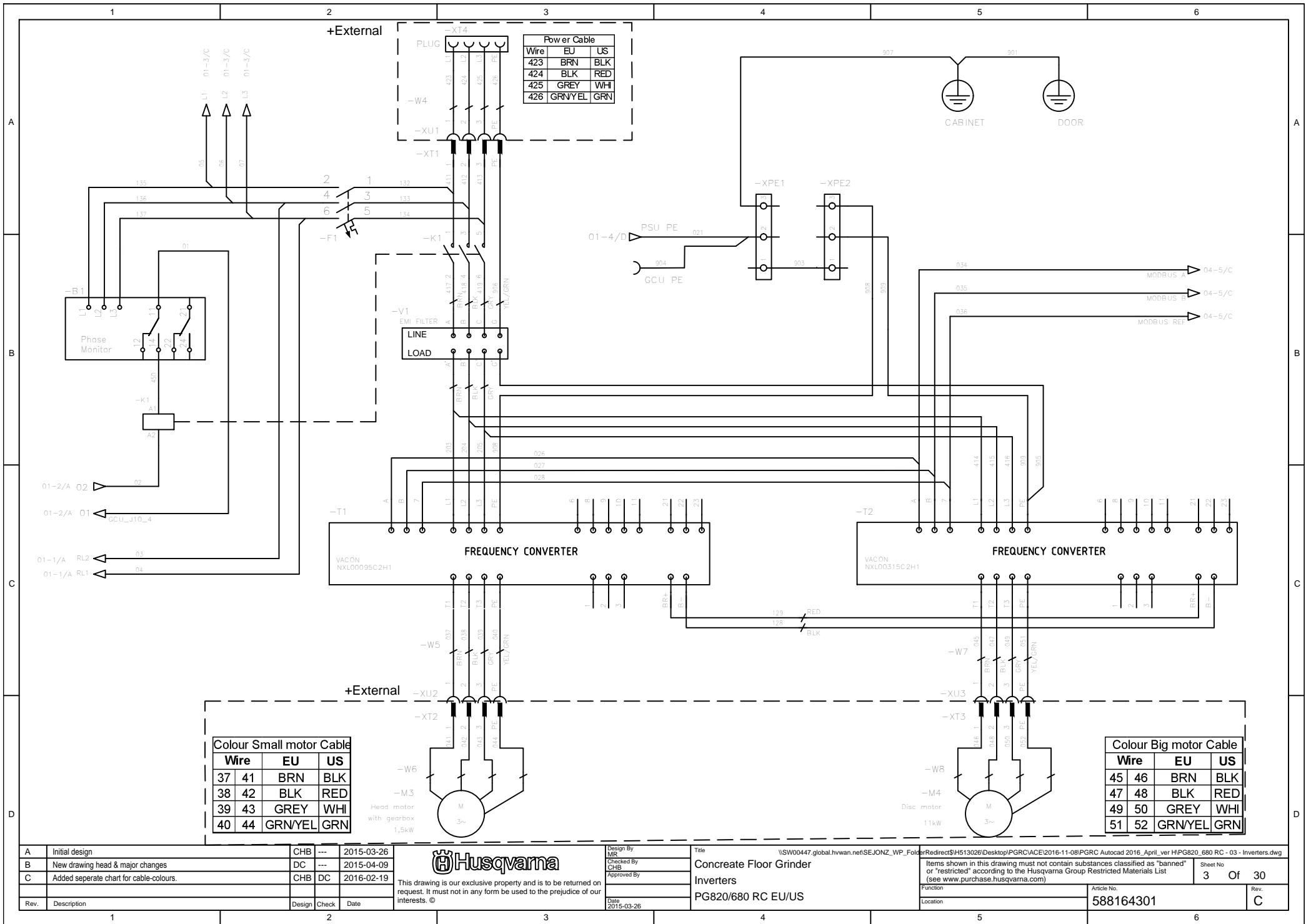
Function

Location

Article No.
588164301

Sheet No
2 Of **30**

Rev.
B



Wire	EU	US
423	BRN	BLK
424	BLK	RED
425	GREY	WHI
426	GRNYEL	GRN

Colour Small motor Cable		
Wire	EU	US
37 41	BRN	BLK
38 42	BLK	RED
39 43	GREY	WHI
40 44	GRNYEL	GRN

Colour Big motor Cable		
Wire	EU	US
45 46	BRN	BLK
47 48	BLK	RED
49 50	GREY	WHI
51 52	GRNYEL	GRN

Rev.	Description	Design	Check	Date
A	Initial design	CHB	---	2015-03-26
B	New drawing head & major changes	DC	---	2015-04-09
C	Added separate chart for cable-colours.	CHB	DC	2016-02-19

Husqvarna

This drawing is our exclusive property and is to be returned on request. It must not in any form be used to the prejudice of our interests. ©

Design By
MR
Checked By
CHB
Approved By
Date
2015-03-26

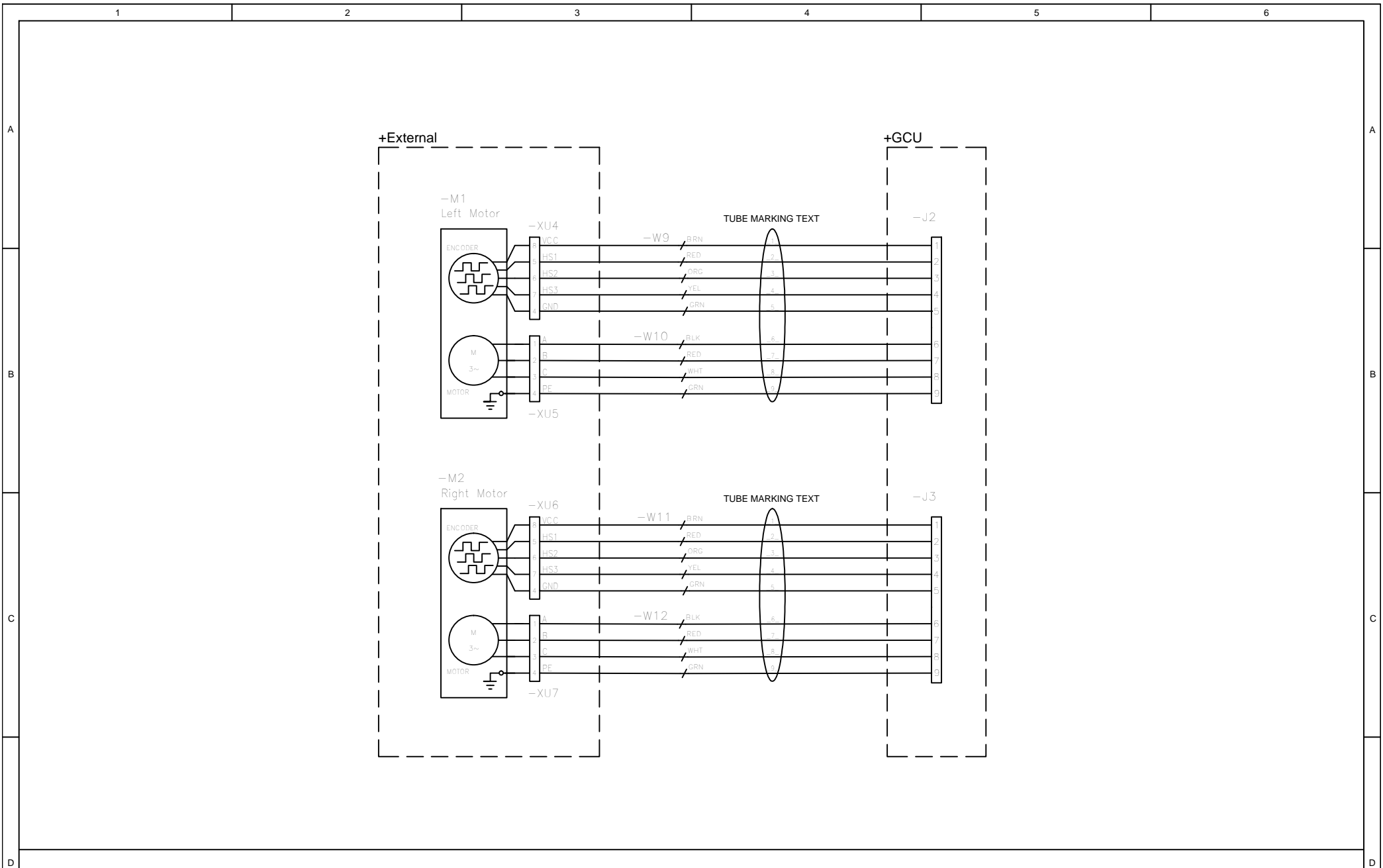
Title
Concrete Floor Grinder
Inverters
PG820/680 RC EU/US

Items shown in this drawing must not contain substances classified as "banned" or "restricted" according to the Husqvarna Group Restricted Materials List (see www.purchase.husqvarna.com)

Article No.
588164301

Rev.
C

Sheet No.
3 Of 30



A	Initial design	CHB	---	2015-03-26
B	New drawing head & major changes	DC	---	2015-04-09
Rev.	Description	Design	Check	Date

Husqvarna

This drawing is our exclusive property and is to be returned on request. It must not in any form be used to the prejudice of our interests. ©

Design By
MR

Checked By
CHB

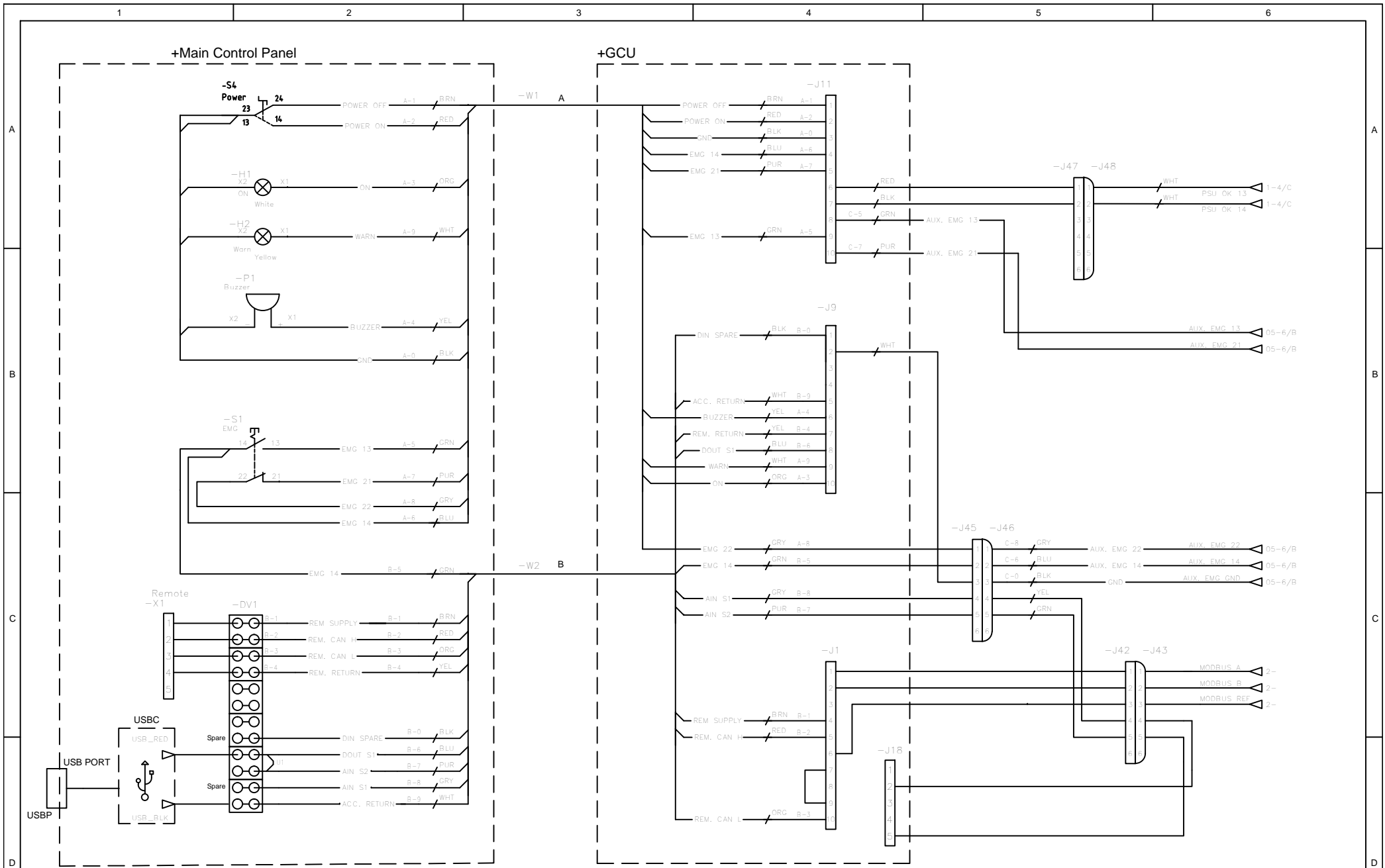
Approved By

Date
2015-03-26

Title

Concrete Floor Grinder
Motor Connections
PG820/680 RC EU/US

Items shown in this drawing must not contain substances classified as "banned" or "restricted" according to the Husqvarna Group Restricted Materials List (see www.purchase.husqvarna.com)		Sheet No 4	Of 30
Function	Article No. 588164301	Rev. B	
Location			



A	Initial design	CHB	---	2015-03-26
B	New drawing head & major changes	DC	---	2015-04-09
C	Added USB-card, USB-port, and wire U1	CHB	---	2015-12-14
Rev.	Description	Design	Check	Date

Husqvarna

This drawing is our exclusive property and is to be returned on request. It must not in any form be used to the prejudice of our interests. ©

Design By MR	Title
Checked By CHB	Concrete Floor Grinder
Approved By	Controls and Connections
Date 2015-03-26	PG820/680 RC EU/US

\SW00447.global.hwvan.net\SEJONZ_WP_Folder\Redirect\$H513026\Desktop\PGRC\ACE\2016-11-08\PGRC Autocad 2016_April_ver\HGP820_680 RC - 05 - Controls and connections.dwg	
Function	Article No.
Location	588164301

Items shown in this drawing must not contain substances classified as "banned" or "restricted" according to the Husqvarna Group Restricted Materials List (see www.purchase.husqvarna.com)	Sheet No 5	Of 30
Rev. C		


Main components

Tag	Description	Article no	Manufacturer	Manufacturer article no	Technical data	Note
-BATT	Battery	587068701	BMZ		7S3P	
-B1	Phase monitor	522869201	Siemens	3UG4617-2CR20		
-C8	Connector	586721701	Schurter	2571-X-7700-A-200B		
-F1	Circuit breaker	587073001	ABB	S203-C6		
-H1	Lamp	585661003	ABB	MLBL-01W	White	On
-H2	Lamp	585661004	ABB	MLBL-01Y	Yellow	Warn
-K1	Contactora	502543601	Moeller	DIL M 32-10		
-M1	Wheel drive motor	586732301	Dunkermotoren		XU4 / XU5	
-M2	Wheel drive motor	586732301	Dunkermotoren		XU6 / XU7	
-M3	Grinding motor	502535701	WEG		1.5 kW	Head motor w/ gearbox
-M4	Grinding motor	502535201	WEG		11 kW	Disc motor
-P1	CB1-620B	587259101	ABB	CB1-620B	X1 / X2	Buzzer
-PSU2	SDI65-24-UD-P5	590067601	CUI Inc	SDI65-24-UD-P5	24V 2,7A 1-phase input	Power Supply
-PSU1	QT20.241	505527401	Puls	QT20.241	24V, 20A 3-phase input	
-R1	Potentiometer	587278801	BI Technologies			Head speed
-R2	Potentiometer	587278801	BI Technologies			Disc speed
-S1	Switch	585638001	ABB	MPET4-10R	1NO 1NC	EMG
-S2	Switch	585592701	ABB	M2SS2-10B	SPST	Stop / Run
-S3	Switch	585592701	ABB	M2SS2-10B	SPST	Rem / Man
-S4	Switch	585592801	ABB	M3SS2-10B	SPDT	Power / Off
-T1	Variable Frequency Drive	502542501	Vacon	NXL00095C2H1	9A	For head motor
-T2	Variable Frequency Drive	502542601	Vacon	NXL00315C2H1	31A	For disc motor
-V1 *	EMI-Filter EU	504717101	Changzhou Jianli Electric			EMI Filter EU
-V1 *	EMI-Filter US	586848801	Schaffner	FN3025HL-30-71		EMI Filter US
-W9	Drive motor power cable	586875701	According to spec...			
-W10	Drive motor signal cable	586875801	Kina			
-W11	Drive motor power cable	586875701	According to spec.			
-W12	Drive motor signal cable	586875801	Kina			
-W13	Antenna cable	587189501	Mobile Mark	CVS-2400		
-XPE1	Earth terminal	502543801	Wago	2006-1307		
-XPE2	Earth terminal	502543801	Wago	2006-1307		
-XT4 *	Power Plug EU	531117136	Mennekes	4	5-pole 32A 400V	Power Plug EU
-XT4 *	Power Plug US	578777301	Jake Time	JT-1630LP (Nema)	4-pole 30A 480V	Power Plug US
-XT4 *	Power Plug AUS	502544001	Kripal	56P432	4-pole 32A 500V	Power Plug AUS
-USBC	USB-Card	501118601	Husqvarna design		USB-Charger-PCB	Input 18-75V, Output 5V
-USBP	USB-port	501119601	Elektron Technology	PXP6043/A	USB-port with cable	Used for charging only.

* V1. Use 504717101 for EU-machines and 586848801 for US machines.

* XT4. Use 531117139 for EU-machines, 578777301 for US machines and 502544001 for AUS machines.

Rev.	Description	Design	Check	Date
A	Initial design	CHB	---	2015-03-26
B	New drawing head & major changes	DCB	---	2015-04-09
C	Added USBC(USB-Card) and USBP(USB-Port)	CHB	---	2015-12-14
D	Changed PSU2 to a newer model. and changed USBC	CHB	DCB	2016-11-08

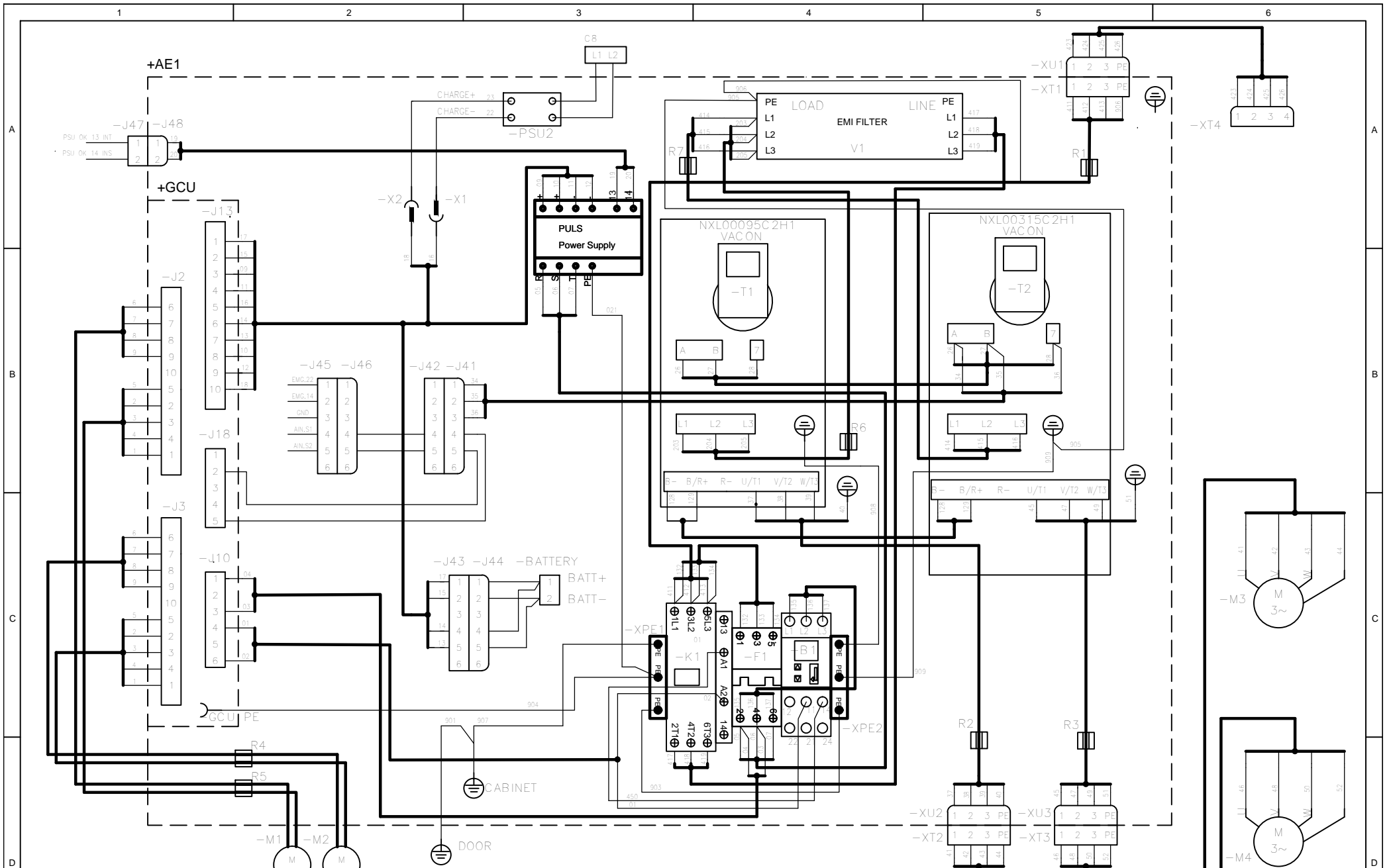
 This drawing is our exclusive property and is to be returned on request. It must not in any form be used to the prejudice of our interests. ©

Design By MR	Title
Checked By CHB	Concrete Floor Grinder
Approved By	Main Components
Date 2015-03-26	PG820/680 RC EU/US

Function	Article No.	Rev.
Location	588164301	D

Items shown in this drawing must not contain substances classified as "banned" or "restricted" according to the Husqvarna Group Restricted Materials List (see www.purchase.husqvarna.com)		Sheet No
		10 Of 30

\\SW00447.global.hwwan.net\SE\JONZ_WP_Folder\Redirect\5\H513026\Desktop\PGRC\ACE\2016-11-08\PGRC Autocad 2016_April_ver H\PG820_680 RC - 10 - Main Components.dwg



Placement of R1-R7, see page 30

E	Wire 906 now inside Ferrite, changed 45.47.49.51	CHB	DC	2016-02-19
G	Changed location on Ferrite R7	CHB	DC	2016-04-14
C	Some wire changes 906.01.02.04.205	DC	---	2015-06-04
D	Uppdated component V1, added R1-R7	CHB	---	2015-11-12
Rev.	Description	Design	Check	Date

Husqvarna
 This drawing is our exclusive property and is to be returned on request. It must not in any form be used to the prejudice of our interests. ©

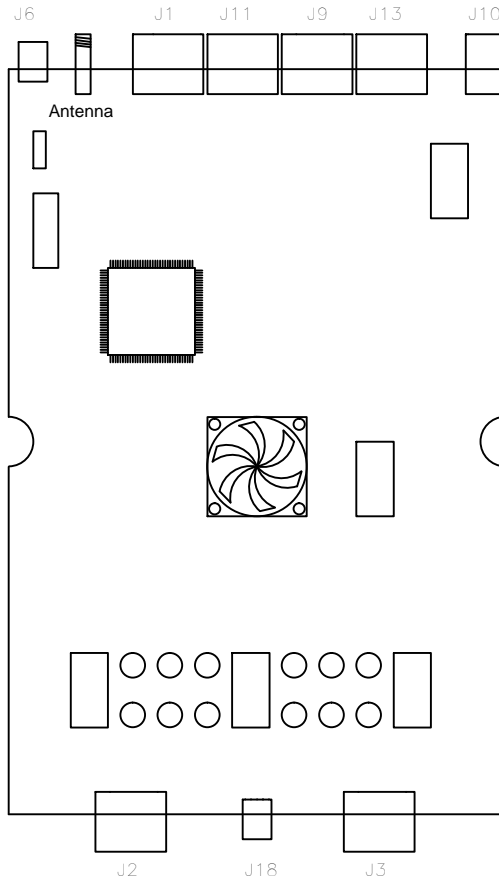
Design By MR	Title
Checked By CHB	Concrete Floor Grinder
Approved By	Montage Layout Main
Date 2015-03-26	PG820/680 RC EU/US

Function	Location

Items shown in this drawing must not contain substances classified as "banned" or "restricted" according to the Husqvarna Group Restricted Materials List (see www.purchase.husqvarna.com)	Article No. 588164301
--	---------------------------------

Sheet No 20	Of 30	Rev. G
-----------------------	-----------------	------------------

GCU



A	Initial design	CHB	---	2015-03-26
B	New drawing head & minor changes	DC	---	2015-04-09
Rev.	Description	Design	Check	Date

Husqvarna

This drawing is our exclusive property and is to be returned on request. It must not in any form be used to the prejudice of our interests. ©

Design By MR
Checked By CHB
Approved By
Date 2015-03-26

Title
\\SW00447.global.hwlan.net\SEJONZ_WP_Folder\Redirect\$13026\Desktop\PGRC\ACE\2016-11-08\PGRC Autocad 2016_April_ver H\PG820_680 RC - 21 - Montage Layout GCU.dwg

Concrete Floor Grinder
Montage Layout GCU
PG820/680 RC EU/US

Items shown in this drawing must not contain substances classified as "banned" or "restricted" according to the Husqvarna Group Restricted Materials List (see www.purchase.husqvarna.com)		Sheet No 21 Of 30
Function	Article No. 588164301	Rev. B
Location		


Wire lengths of new/changed wires only

Wire nr:	Length cm	Area	From	End type	To	End type
132	15	AWG 16	-K1:1	BL	-F1:1	BL
133	15	AWG 16	-K1:3	BL	-F1:3	BL
134	15	AWG 16	-K1:5	BL	-F1:5	BL
135	23	AWG 20	-F1:2	BL	-B1:L1	BL
136	23	AWG 20	-F1:4	BL	-B1:L2	BL
137	23	AWG 20	-F1:6	BL	-B1:L3	BL
203	80	AWG 14	-V1:L1'	BL	-T1:L1	BL
204	80	AWG 14	-V1:L2'	BL	-T1:L2	BL
205	80	AWG 14	-V1:L3'	BL	-T1:L3	BL
411	92	AWG 10	-XT1:1	BL	-K1:1	BL
412	92	AWG 10	-XT1:2	BL	-K1:3	BL
413	92	AWG 10	-XT1:3	BL	-K1:5	BL
414	90	AWG 10	-V1:A'	BL	-T2:L1	BL
415	90	AWG 10	-V1:B'	BL	-T2:L2	BL
416	90	AWG 10	-V1:C'	BL	-T2:L3	BL
417	95	AWG 10	-V1:L1	BL	-K1:2	BL
418	95	AWG 10	-V1:L2	BL	-K1:4	BL
419	95	AWG 10	-V1:L3	BL	-K1:6	BL
450	45	AWG 20	-B1:14	BL	-K1:A1	BL
905	98	AWG 10	-V1:G	Ring YL	-T2:PE	
906	55	AWG 10	-XT1:PE	Ring YL	-V1:G	PEELED 10MM
908	17	AWG 10	-XPE2:3	Ring YL	-T1:PE	Ring YL
U1	10	AWG 16	DV1:B6	BL	DV1:B7	BL

BL	Bootlace Ferrules
Ring YL	Ring connector for AWG 10

Placement of Ferrites(page 20)			
Component	Placement		
R1	504717201	1dm after XT1	
R2	504717201	1dm before XU2	
R3	504717201	1dm before XU3	
R4	504717201	2dm after J3	Only on CE version
R5	504717201	2dm after J3	Only on CE version
R6	504717201	1dm before T1	Only on CE version
R7	504717201	1dm after V1	Only on CE version
Make sure the Ferrite is secure with cable ties on both			

Rev.	Description	Design	Check	Date
E	Changed length on some wires, added Ferrite placement	CHB	---	2015-11-12
F	Added USB- feedback wire(U1)	CHB	---	2015-12-14
G	Changed location on R7	CHB	DC	2016-04-14
D	Added article nr. on Ring YL	CHB	---	2015-09-04


This drawing is our exclusive property and is to be returned on request. It must not in any form be used to the prejudice of our interests. ©

Design By MR	Title Concrete Floor Grinder Wire spec. PG820/680 RC EU/US
Checked By CHB	
Approved By	
Date 2015-03-26	

<small>\\SVW00447.global.hvva.com\net\SE_JONZ_WP_Folder\Redirect\$H513026\Desktop\PGRC\ACE\2016-11-08\PGRC Autocad 2016_April_ver HP820-680 RC-30 - Wire spec.dwg</small>		Sheet No 30 Of 30
<small>Items shown in this drawing must not contain substances classified as "banned" or "restricted" according to the Husqvarna Group Restricted Materials List (see www.purchase.husqvarna.com)</small>		Article No. 588164301
Function Location		Rev. G